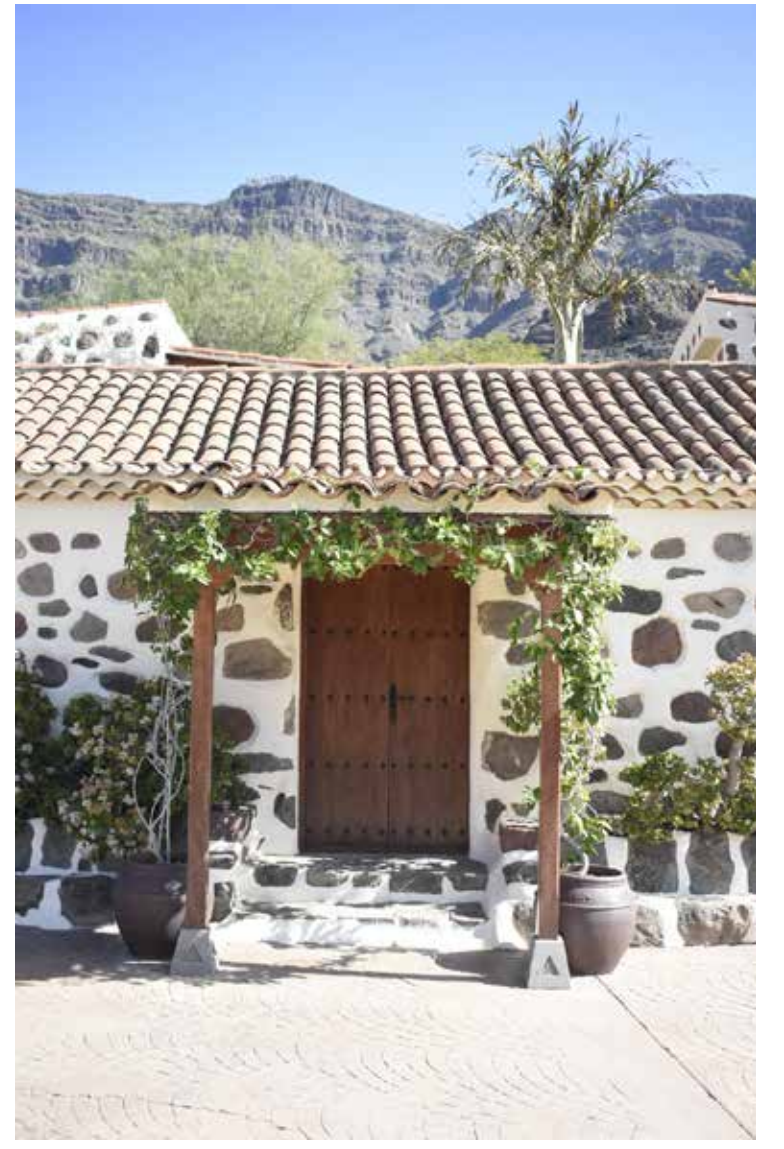


RUYMÁN RODRÍGUEZ
ARQUITECTO

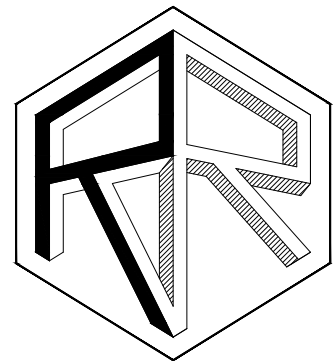


RUYMÁN RODRÍGUEZ **ARQUITECTO**

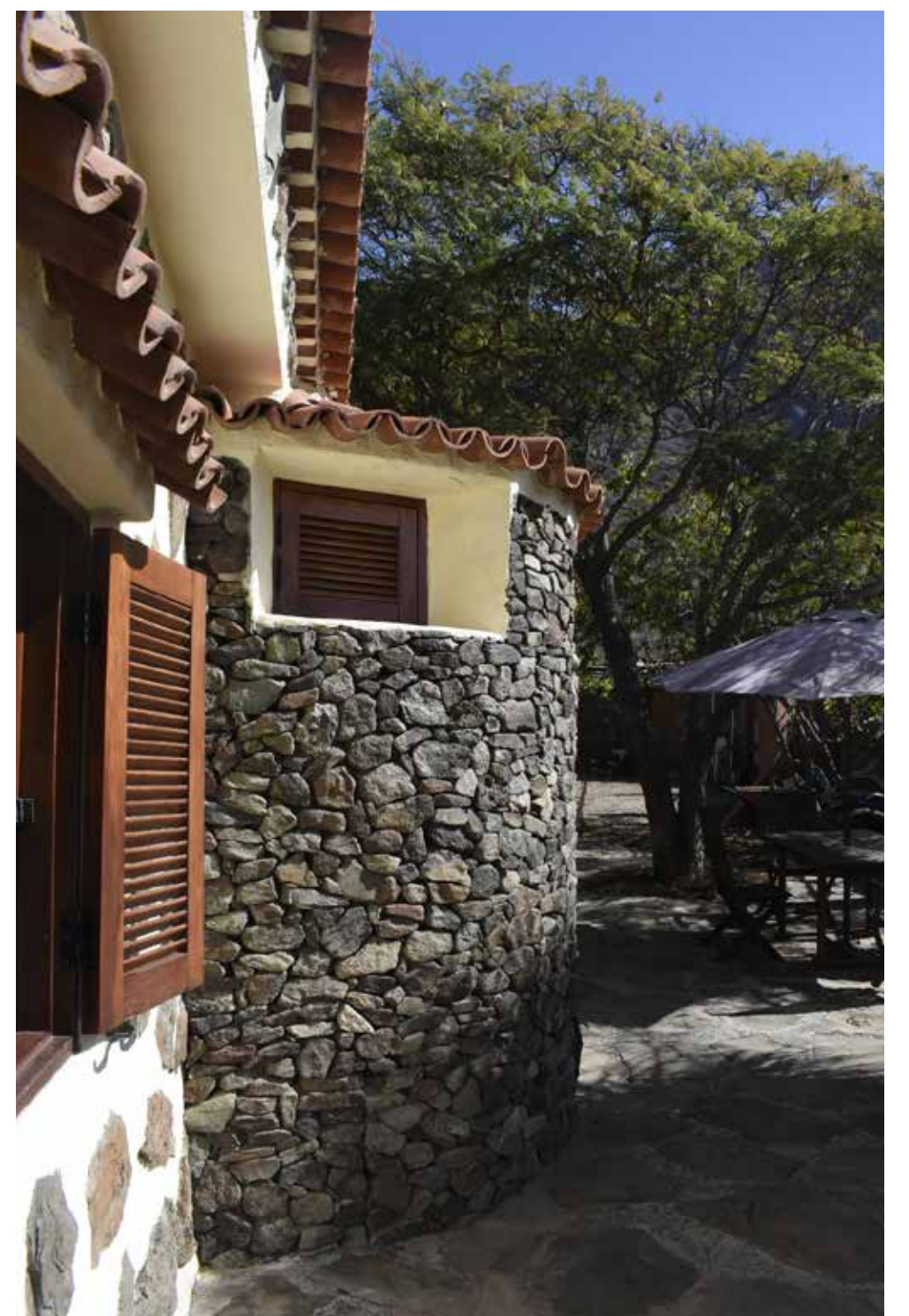
ARQUITECTO DESDE EL AÑO 2003, HA REALIZADO NUMEROSOS PROYECTOS EN MUCHOS DE LOS ÁMBITOS DE LA ARQUITECTURA COMO SON LA EDIFICACIÓN, INTERIORISMO, URBANISMO, PAISAJISMO O DISEÑO GRÁFICO EN LUGARES TALES COMO MILÁN, SENEGAL, BARCELONA, MAURITANIA, LANZAROTE, FUERTEVENTURA, TENERIFE, LA GOMERA O GRAN CANARIA ENTRE OTROS.

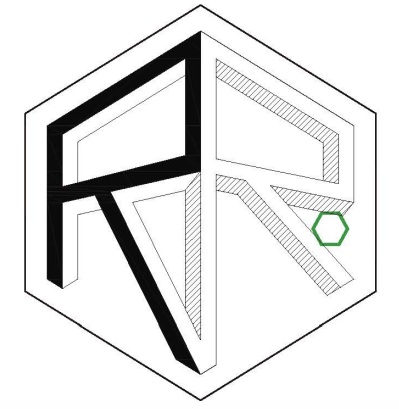


VIVIENDA "LUNA DE MIEL".
GRAN CANARIA. AÑO 2018.



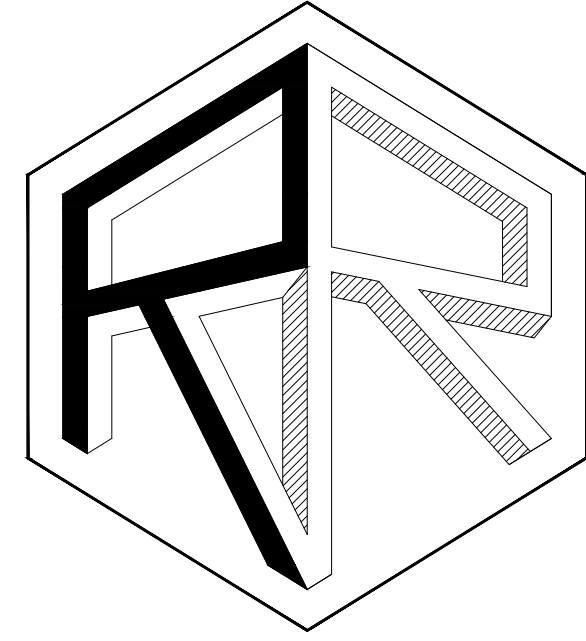
RUYMAN RODRIGUEZ
ARQUITECTO



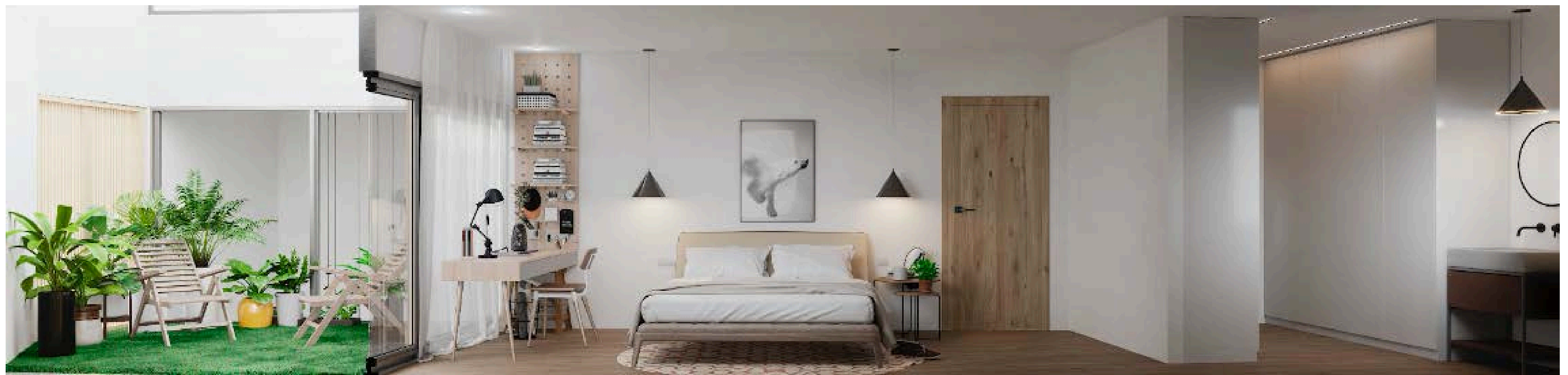


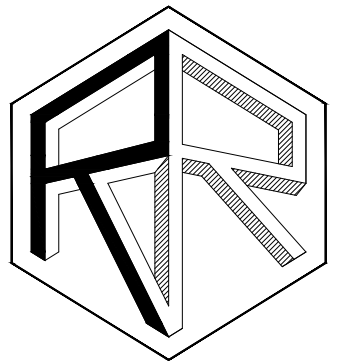
RUYMAN RODRIGUEZ
ARQUITECTO



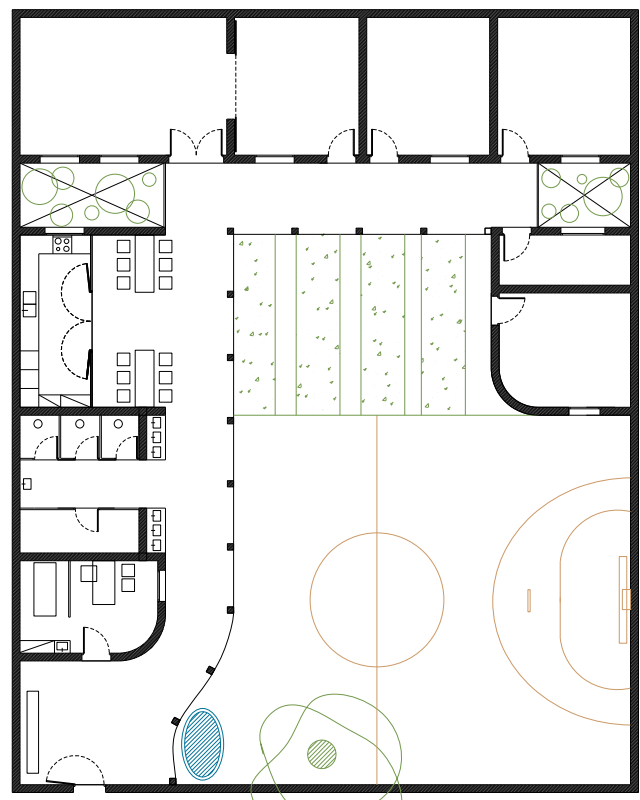


RUYMAN RODRIGUEZ
ARQUITECTO

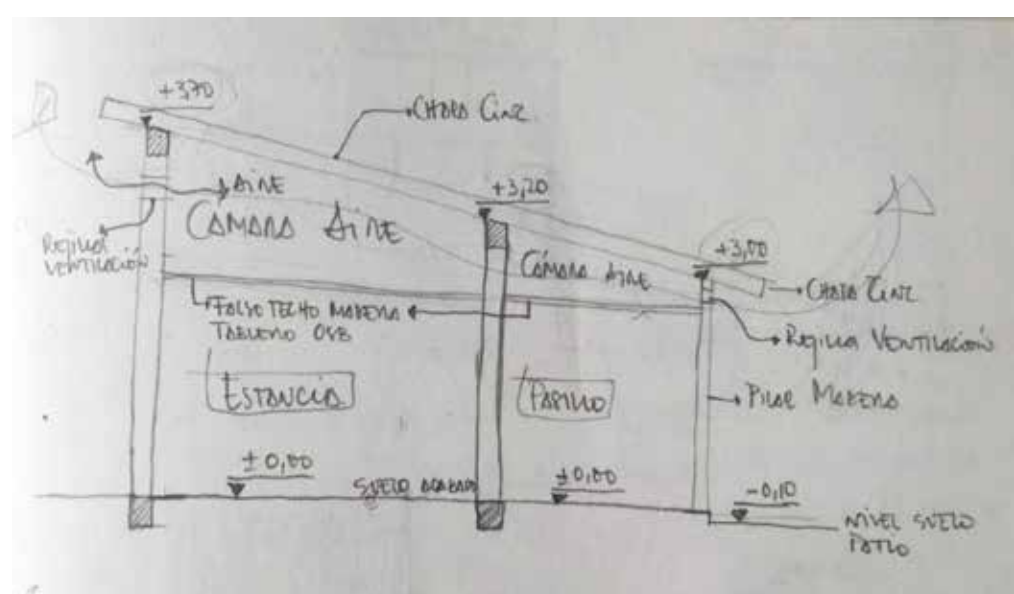




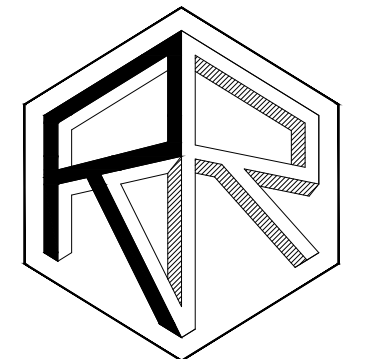
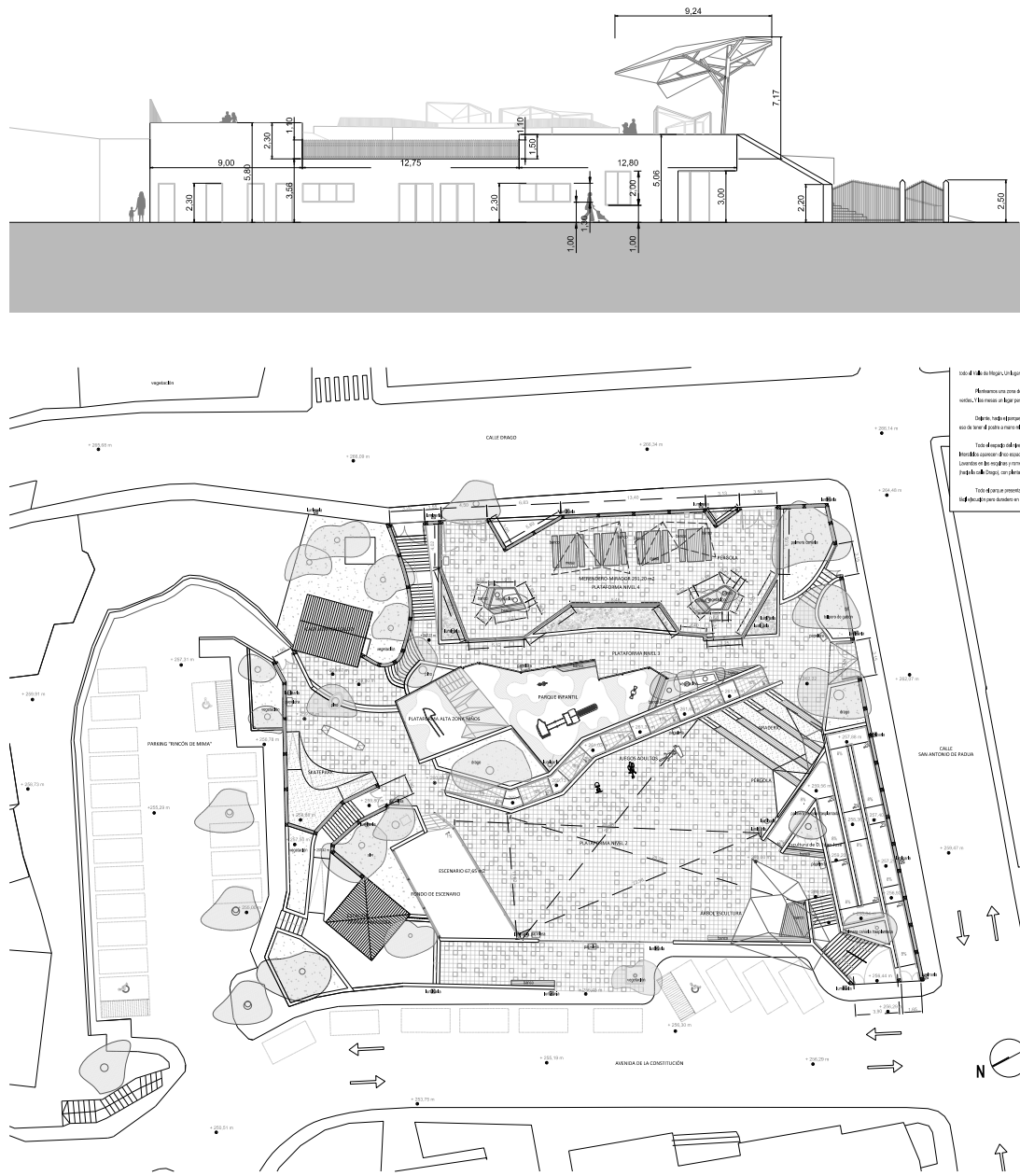
RUYMAN RODRIGUEZ
ARQUITECTO



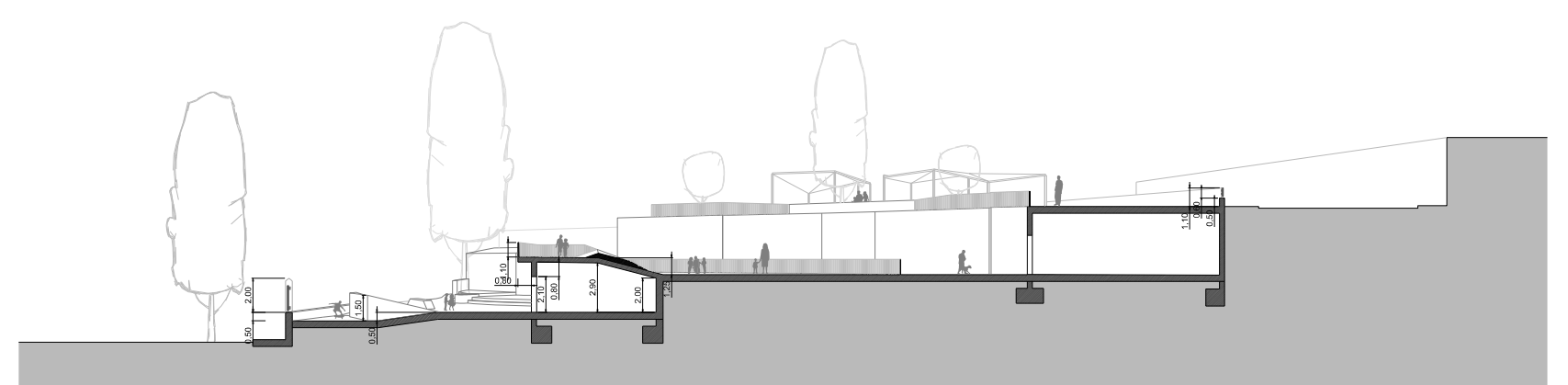
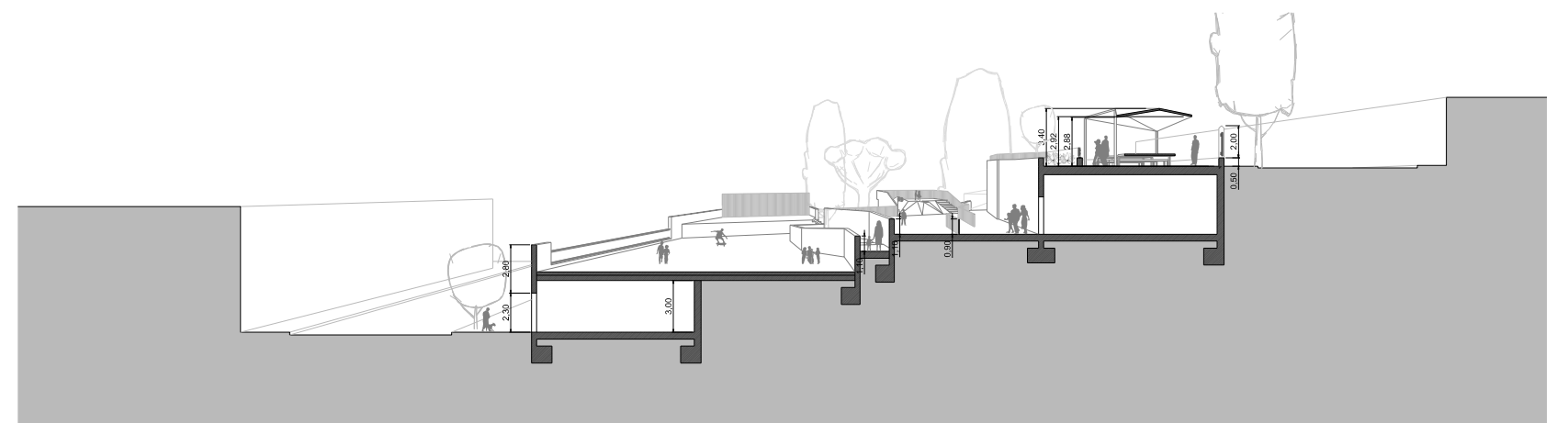
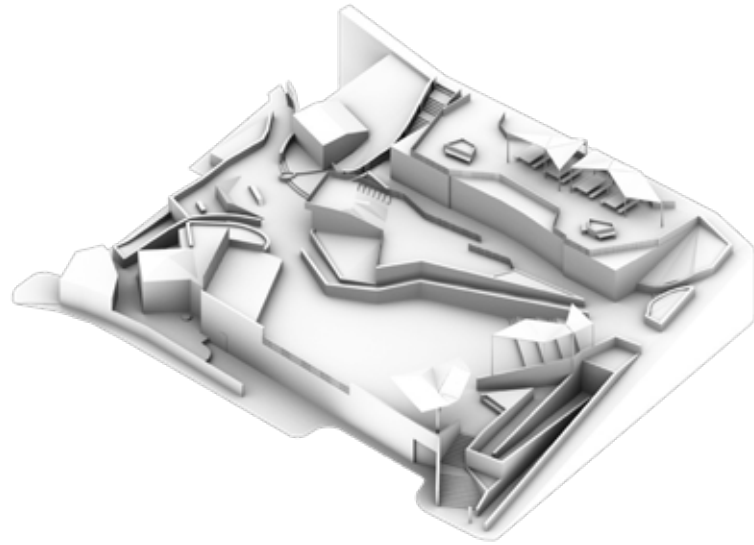
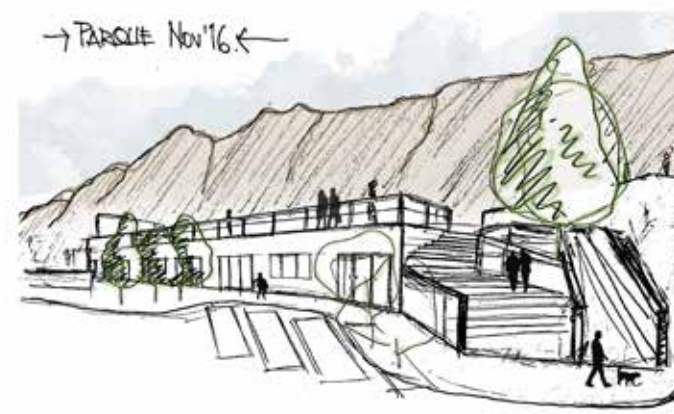
CASA DE ESCUCHA (PARA NIÑOS DE LA CALLE).
M'BOUR. SENEGAL. AÑO 2018.



PARQUE NICOLÁS QUESADA. GRAN CANARIA. AÑO 2017.

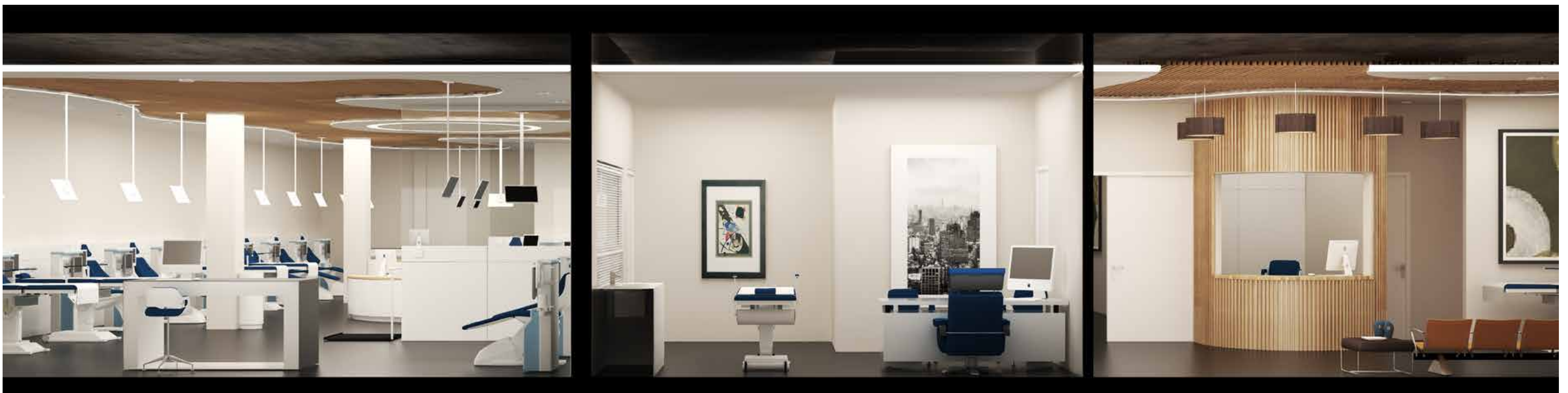
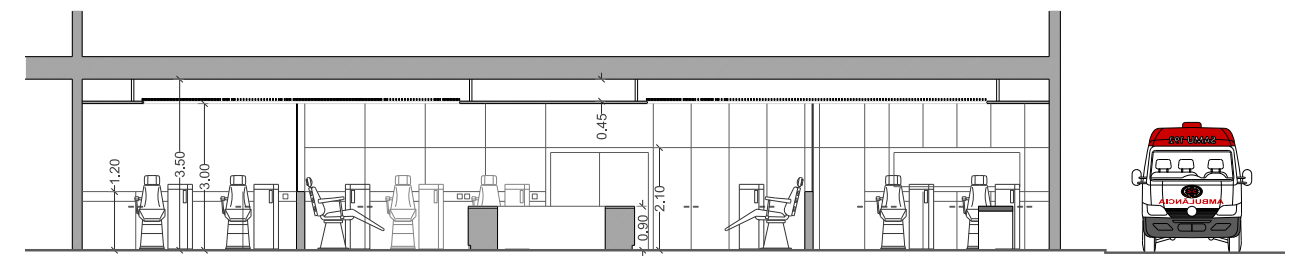
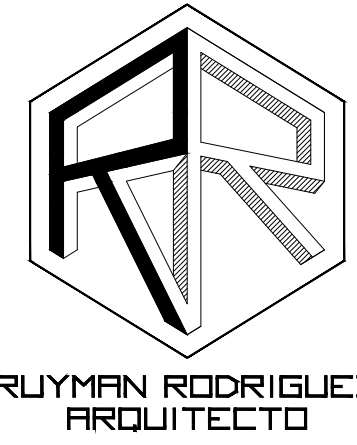


RUYMAN RODRIGUEZ
ARQUITECTO



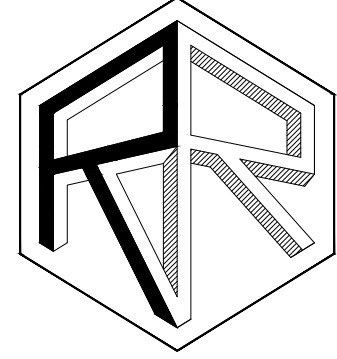


CENTRO DE HEMODIÁLISIS, GRAN CANARIA. AÑO 2018.

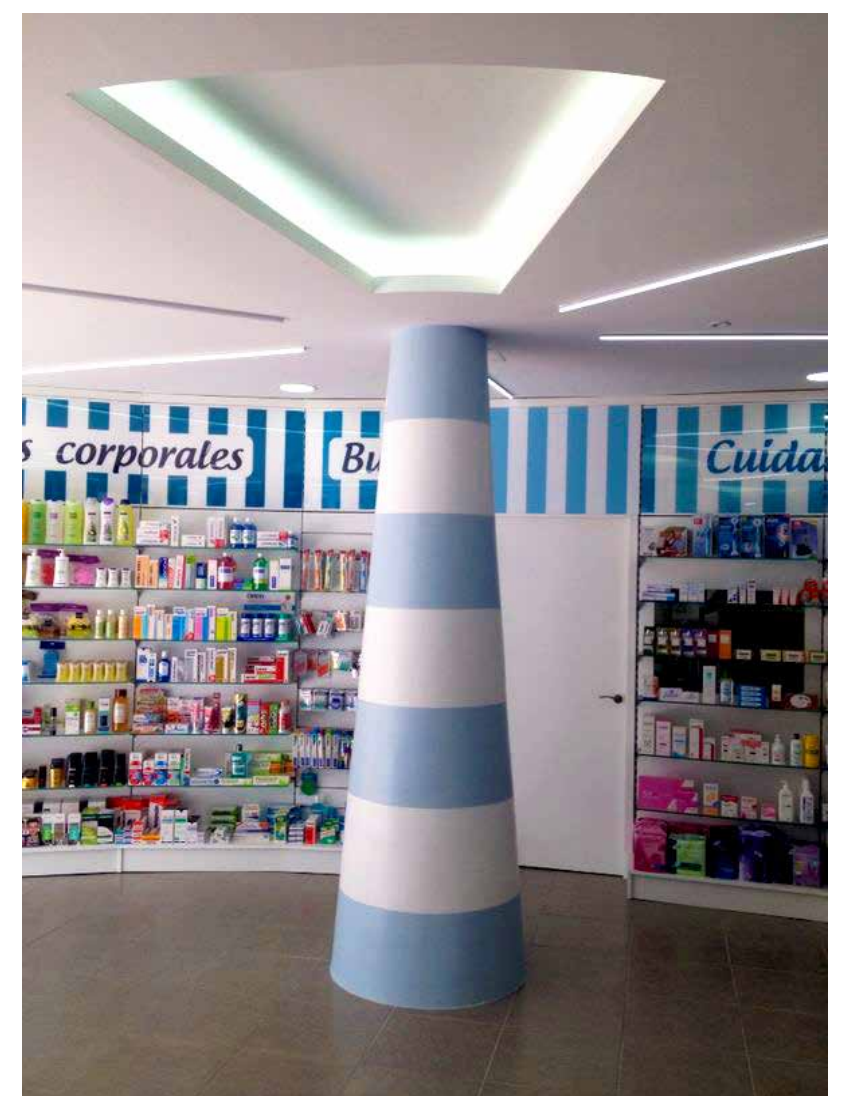
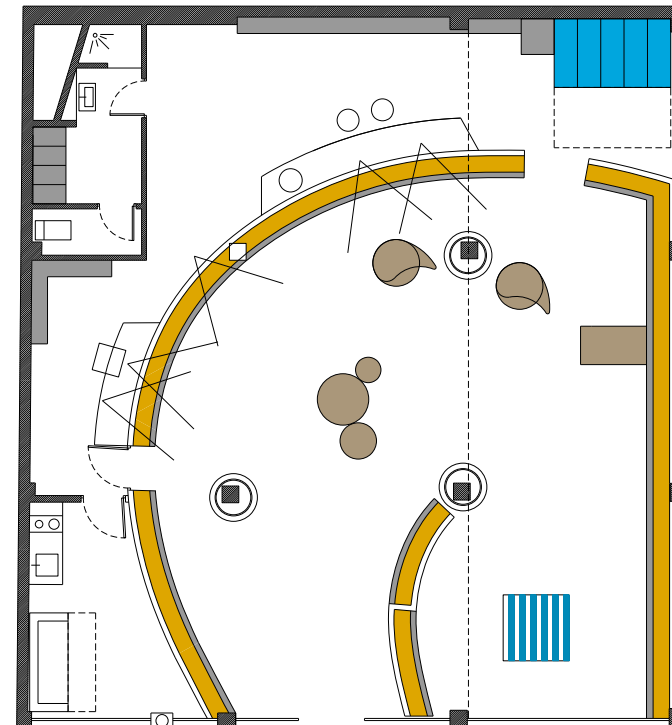
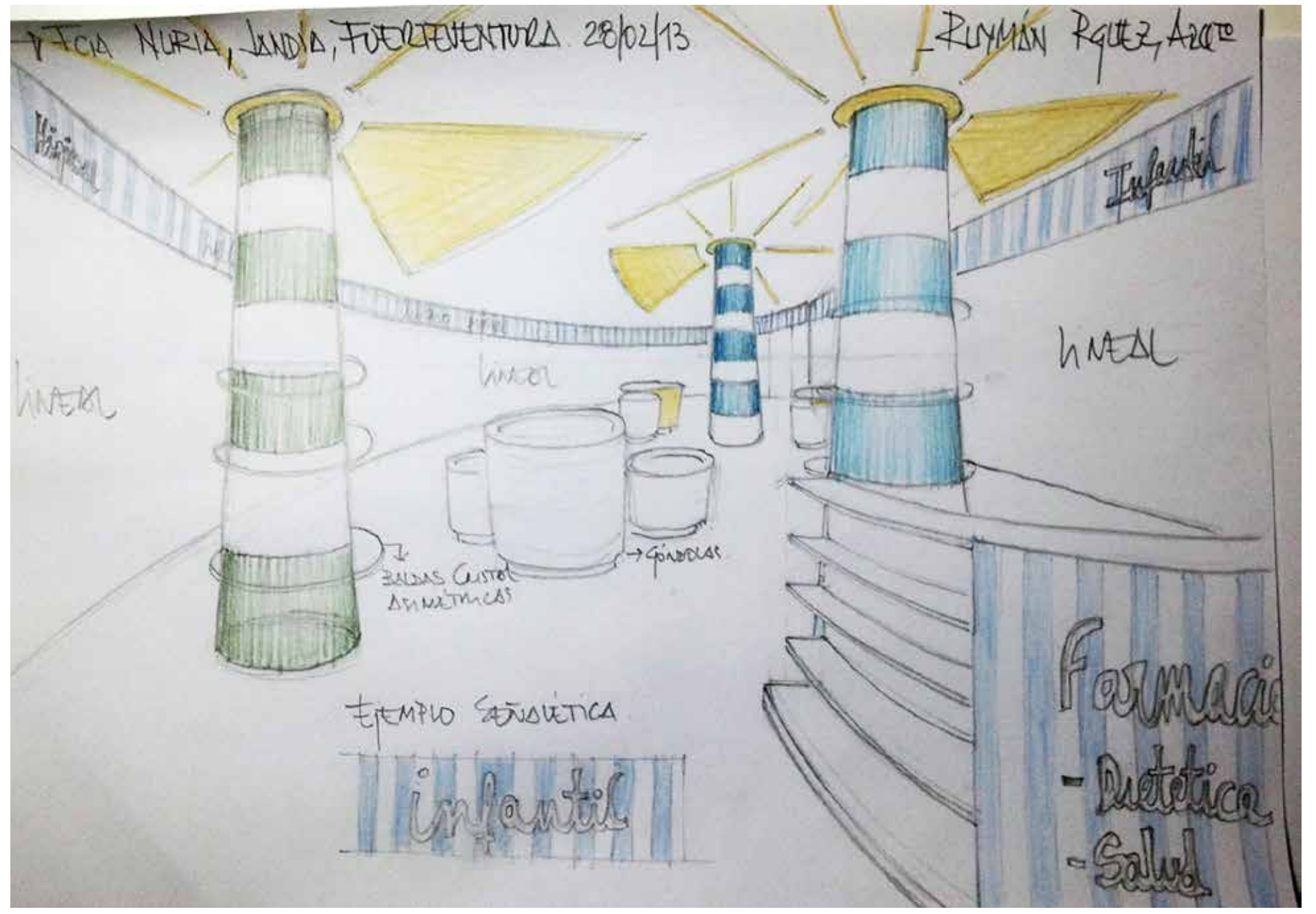


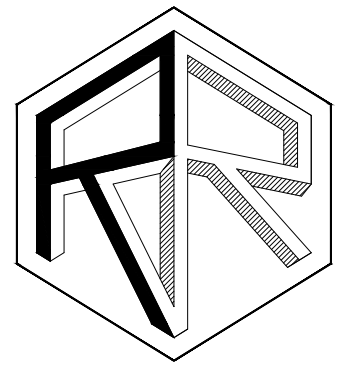
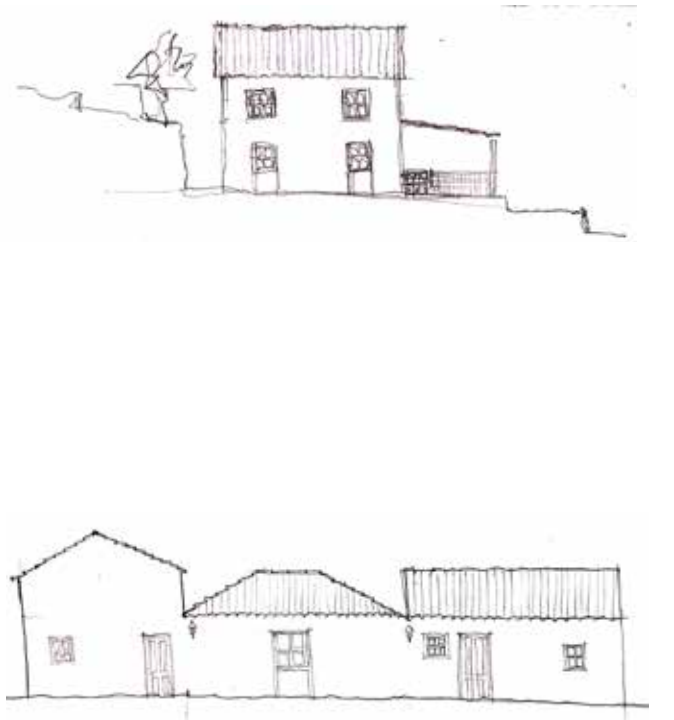


FARMACIA DE LOS TRES FAROS.
FUERTEVENTURA. AÑO 2013.
GRUPO APOTHEKA S.A.

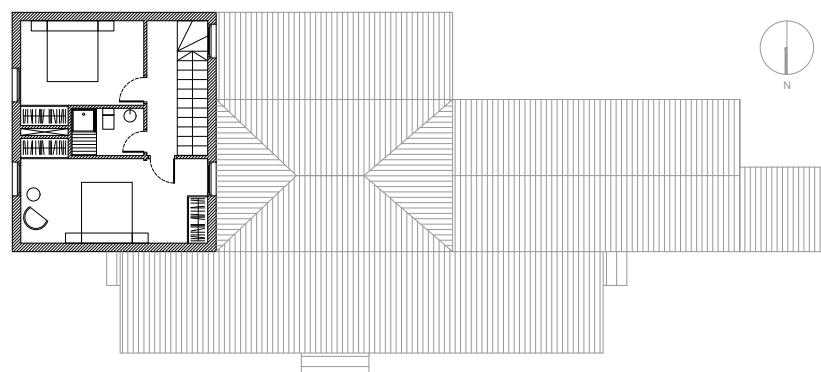
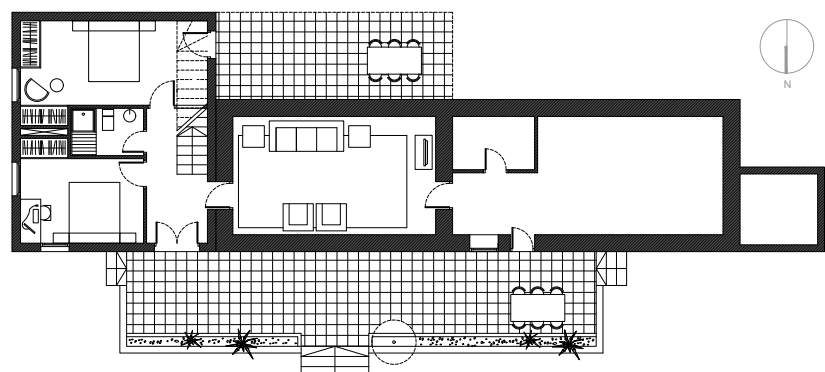


RUYMAN RODRIGUEZ
ARQUITECTO



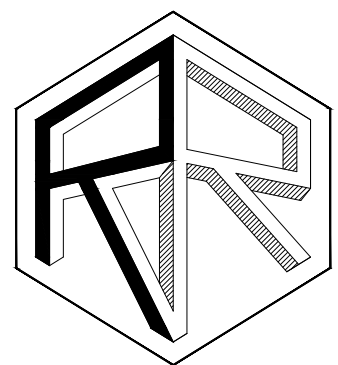


RUYMAN RODRIGUEZ
ARQUITECTO



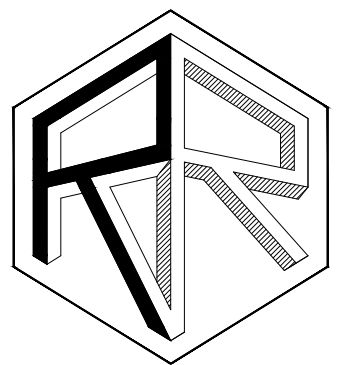
VIVIENDA "LA MARQUESITA".
LA PALMA. AÑO 2014.

COCINA EN TAFIRA.
GRAN CANARIA. AÑO 2018.



RUYMAN RODRIGUEZ
ARQUITECTO

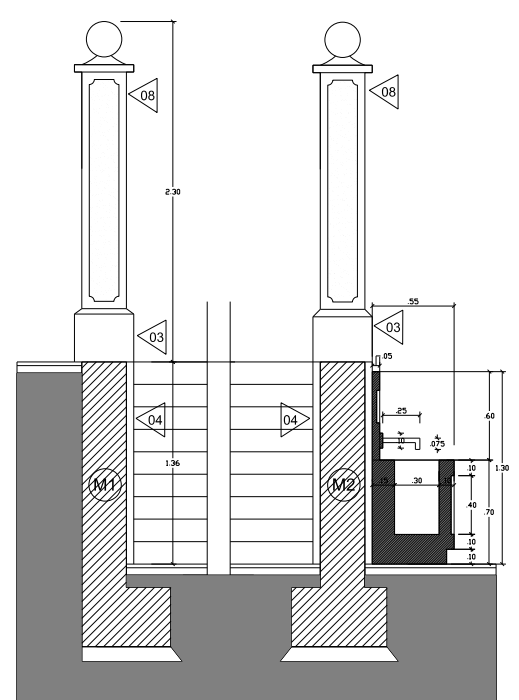
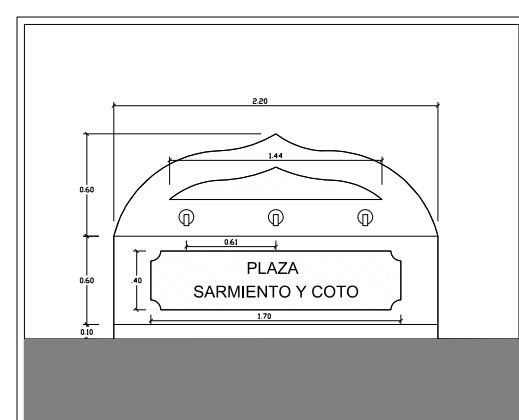
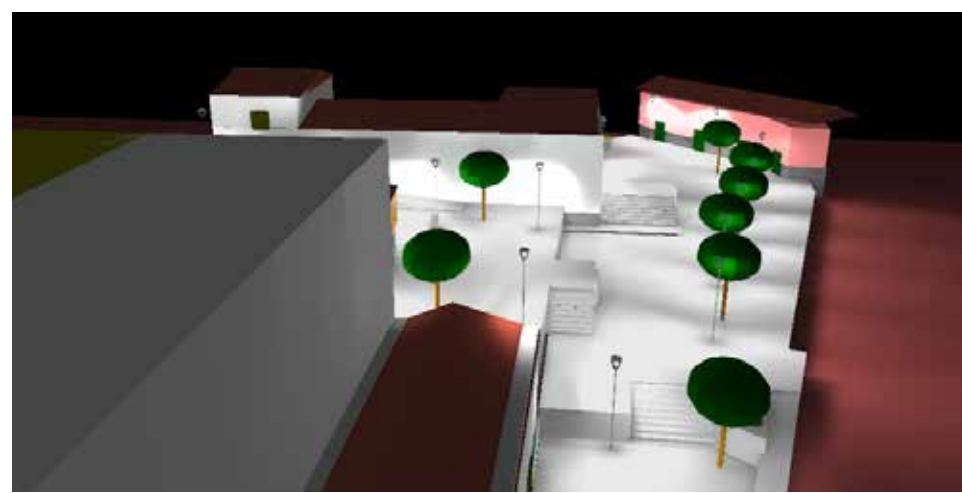
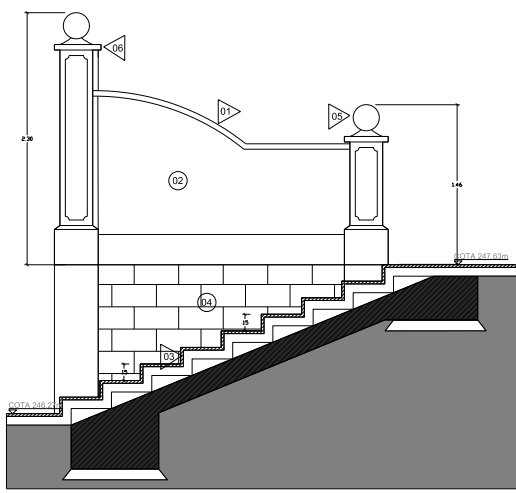
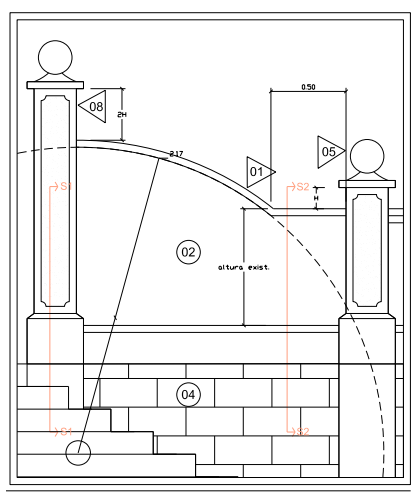
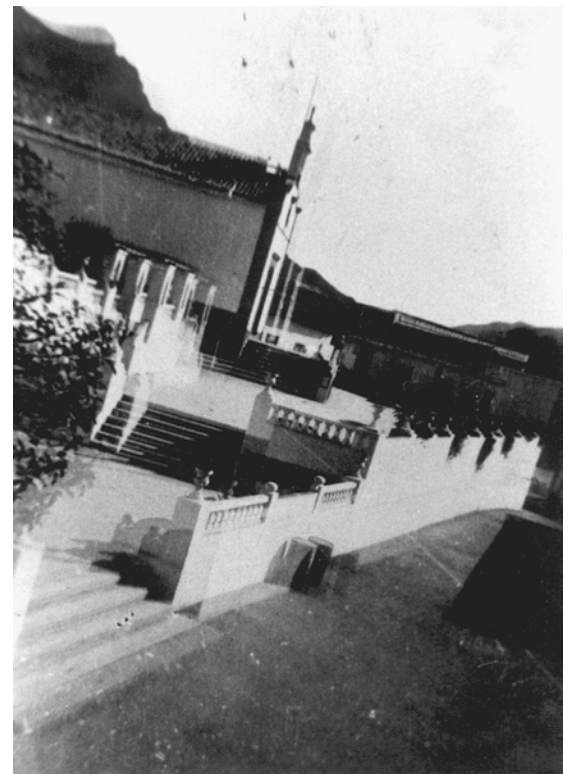


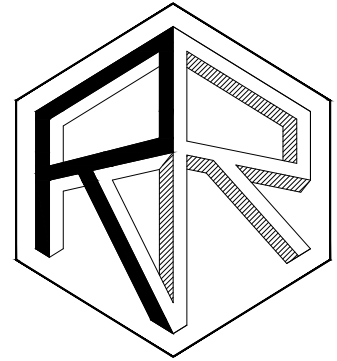


RUYMAN RODRIGUEZ
ARQUITECTO



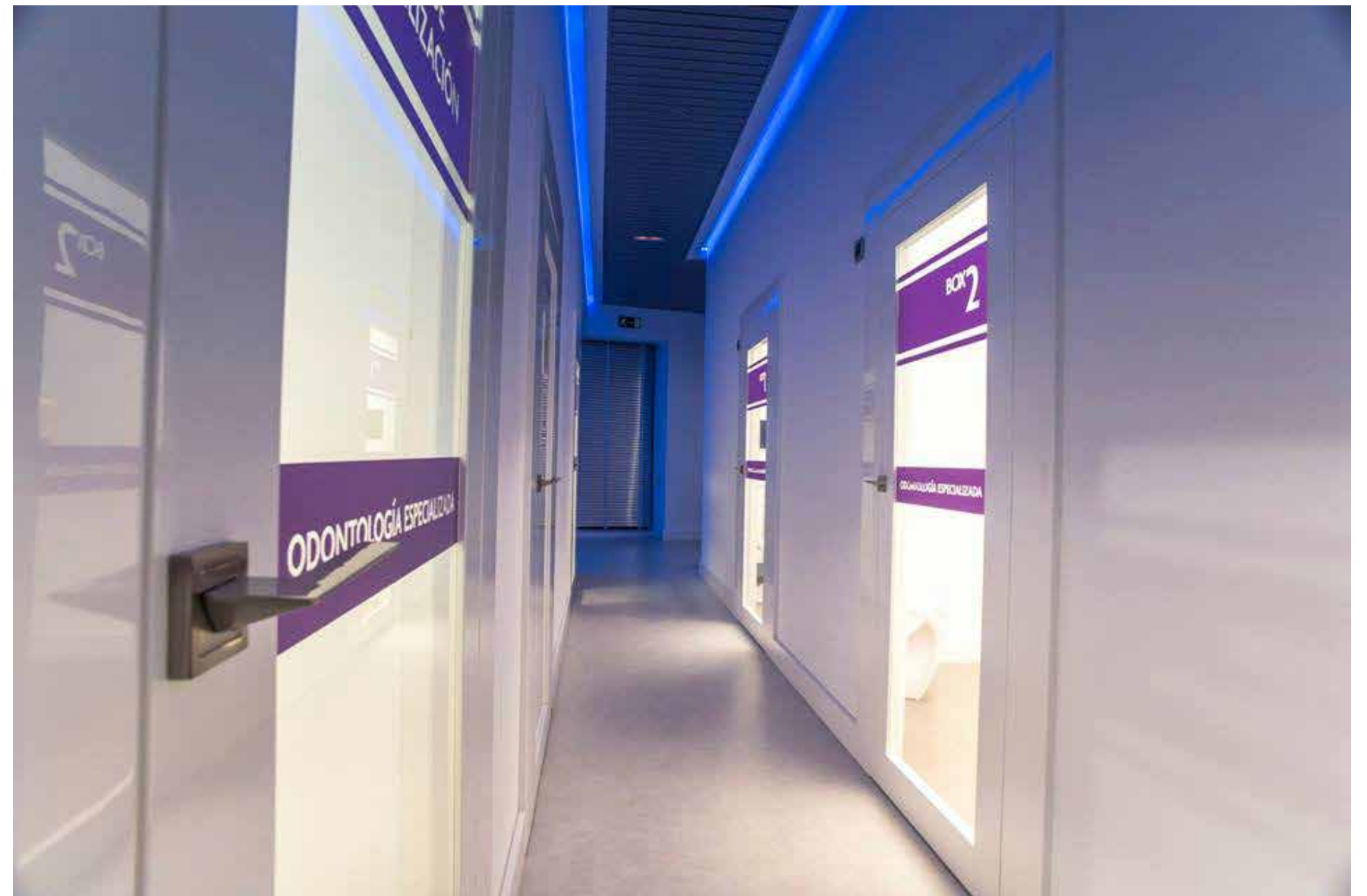
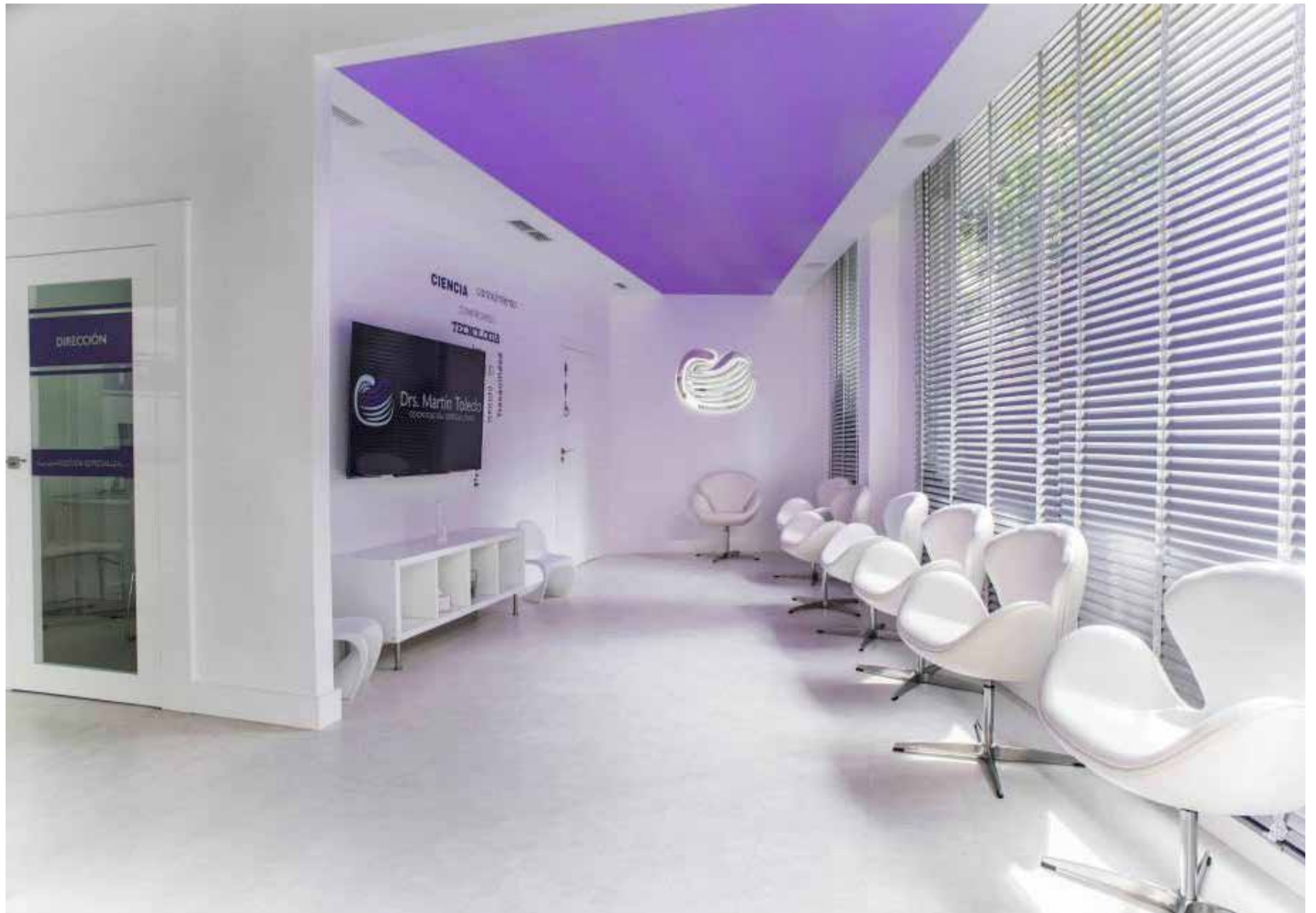
PLAZA SARMIENTO Y COTO.
GRAN CANARIA. AÑO 2016.

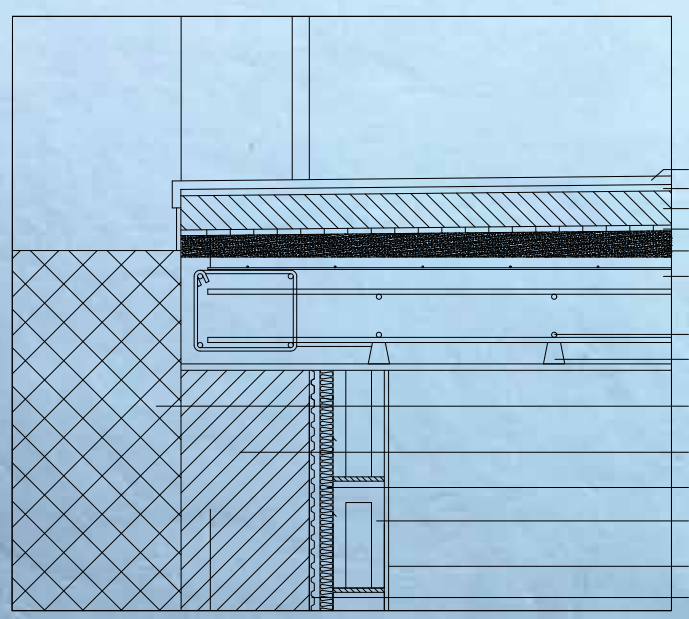




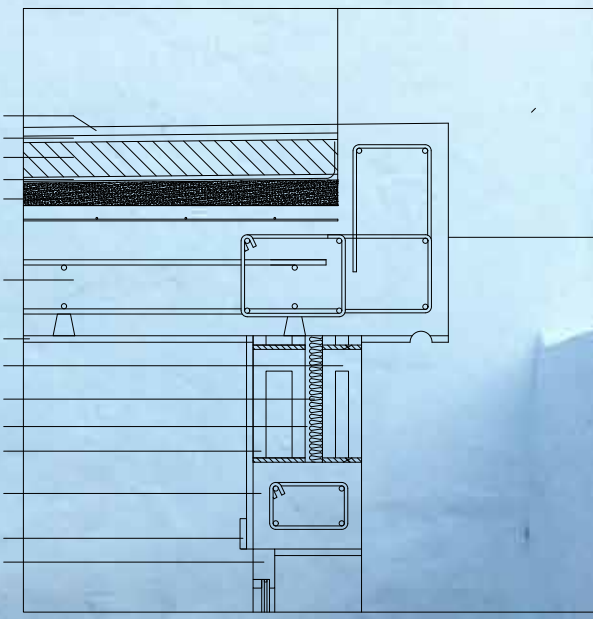
RUYMAN RODRIGUEZ
ARQUITECTO

CLÍNICA DRs. MARTÍN TOLEDO.
GRAN CANARIA. AÑO 2012.

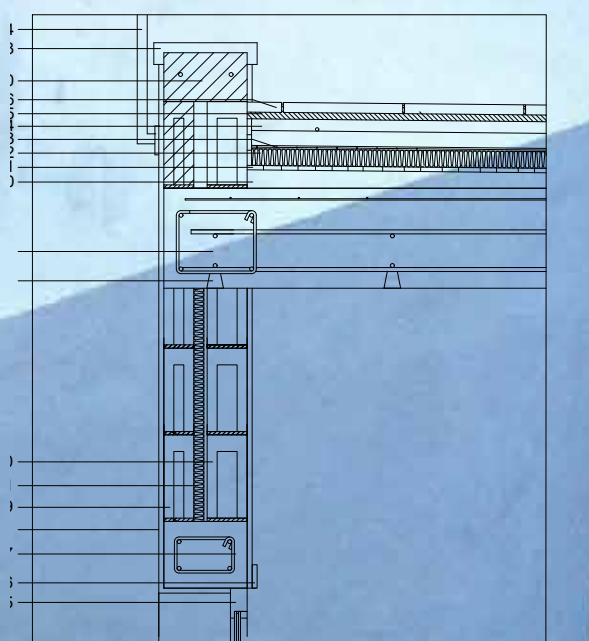




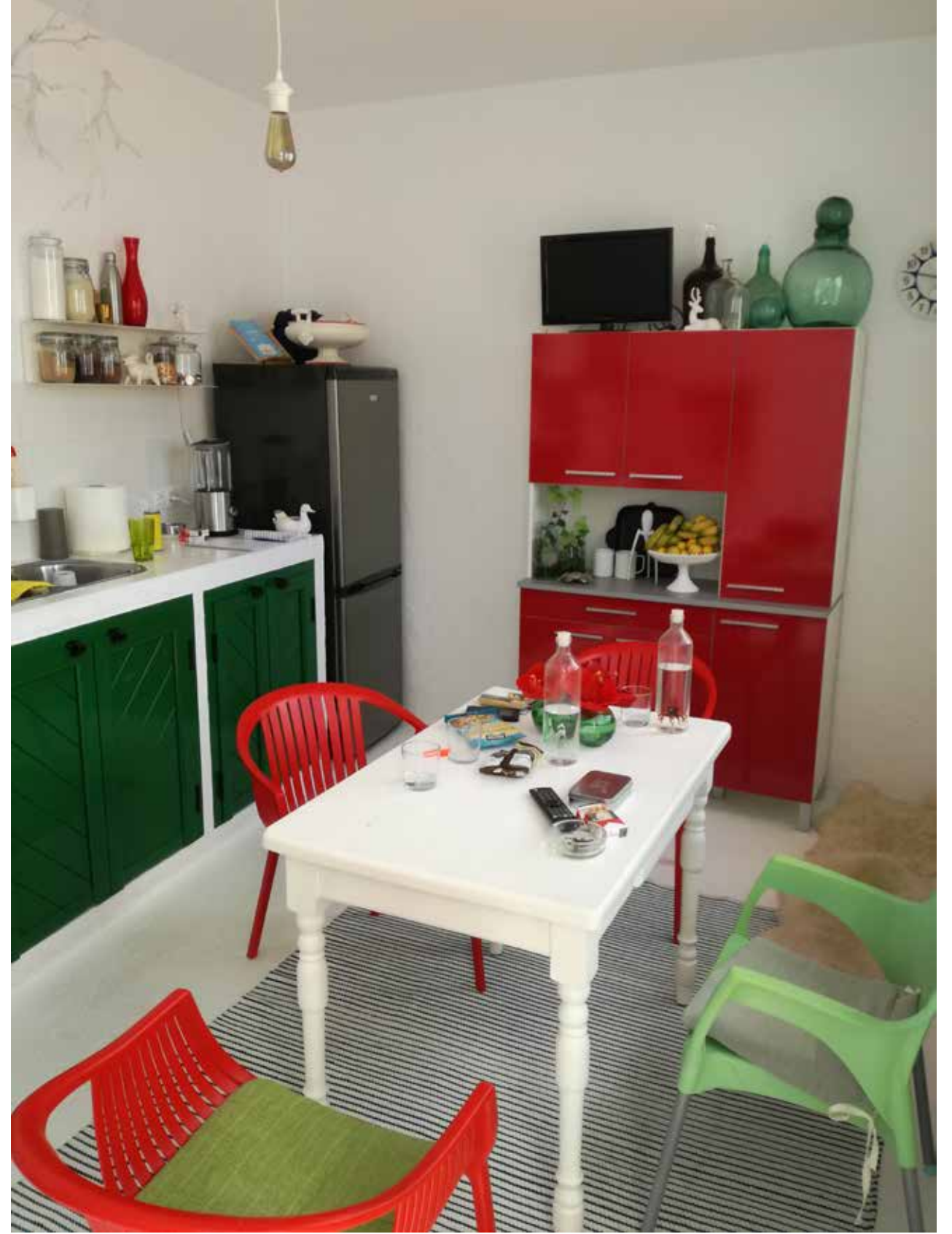
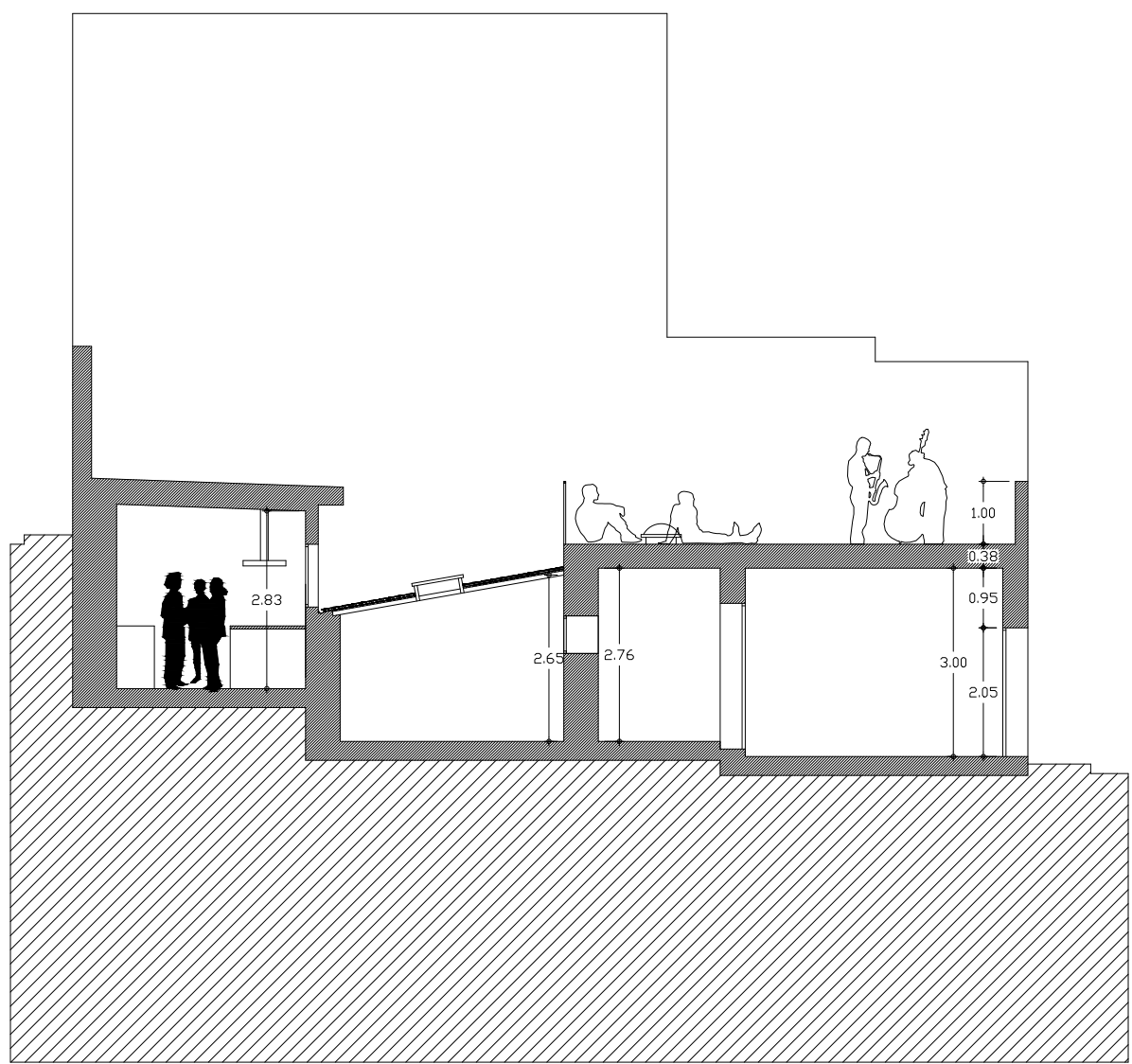
DETALLE CONSTRUCTIVO 02



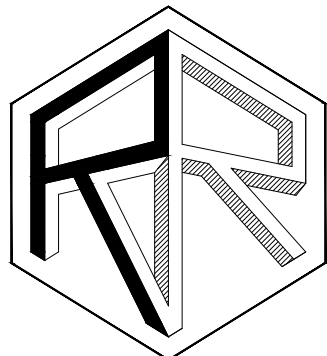
DETALLE CONSTRUCTIVO 04



DETALLE CONSTRUCTIVO 06

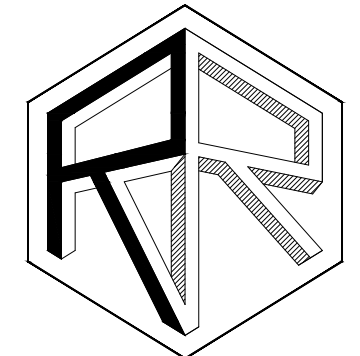
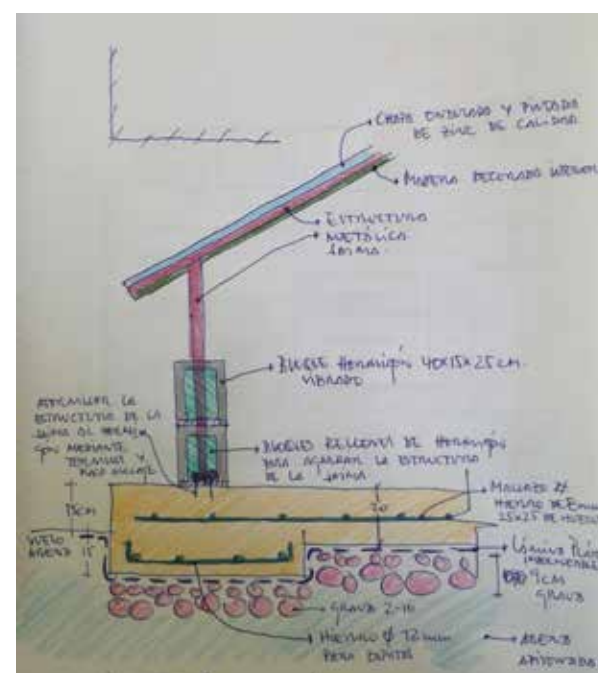
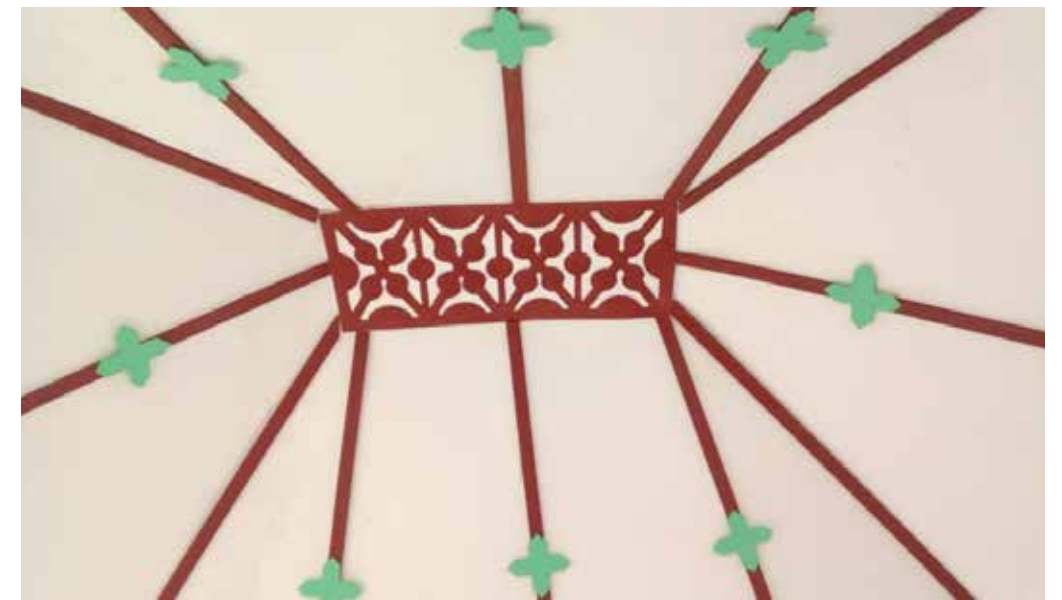
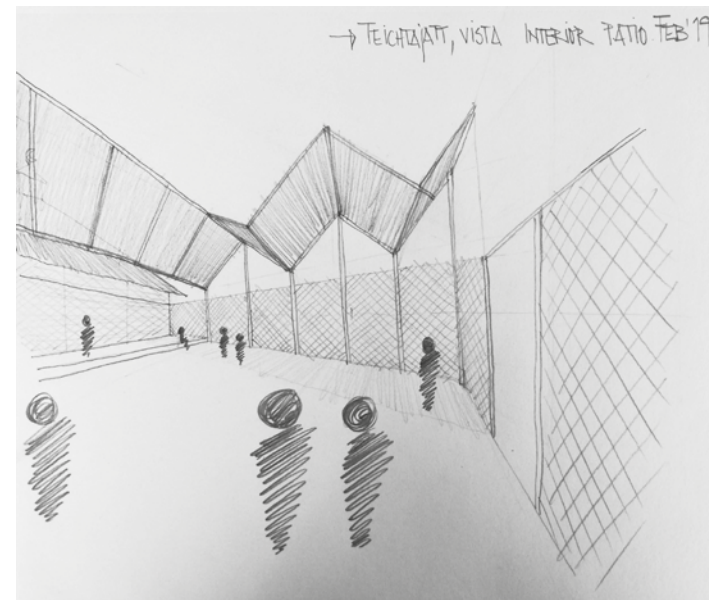
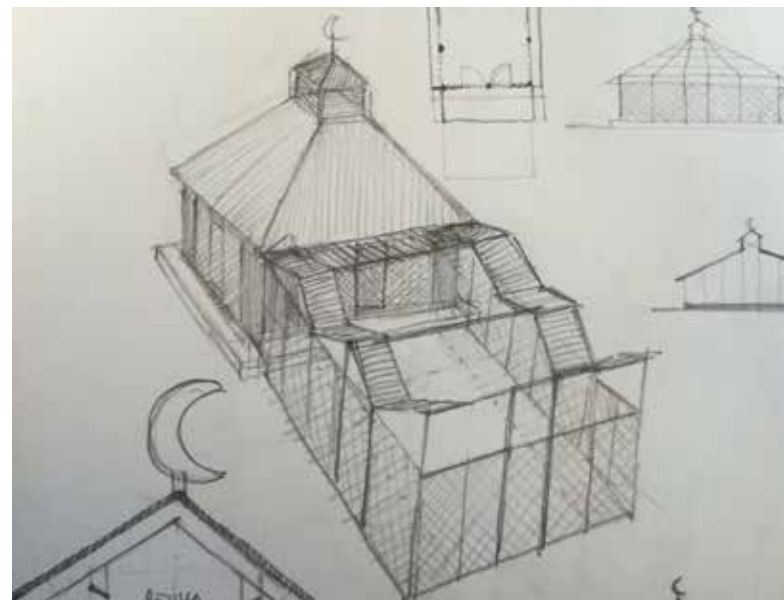
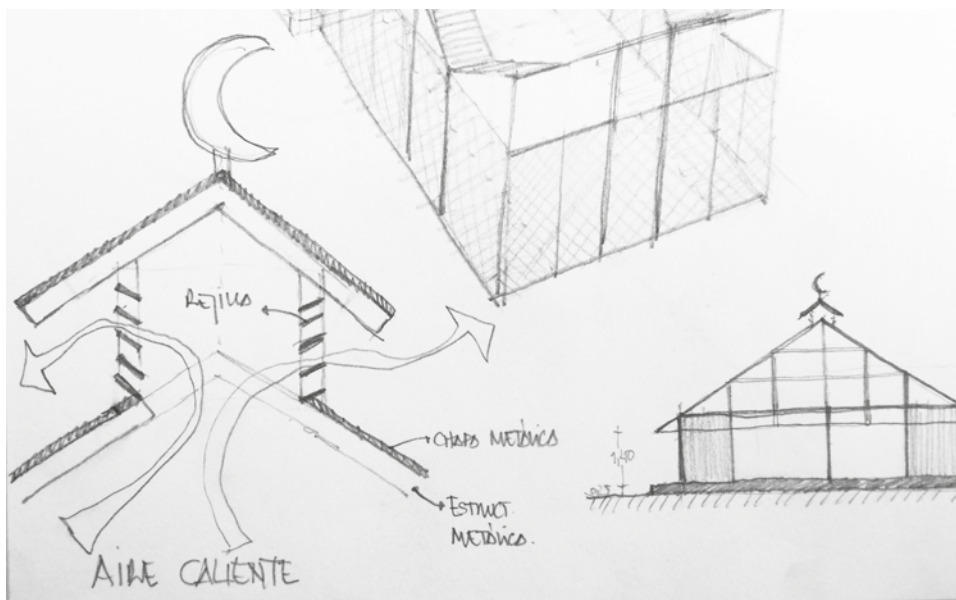


CASA "LIBÉLULA".
GRAN CANARIA. 2019.
INTERIORISMO
RAMÓN DELGADO.



RUJMAN RODRIGUEZ
ARQUITECTO

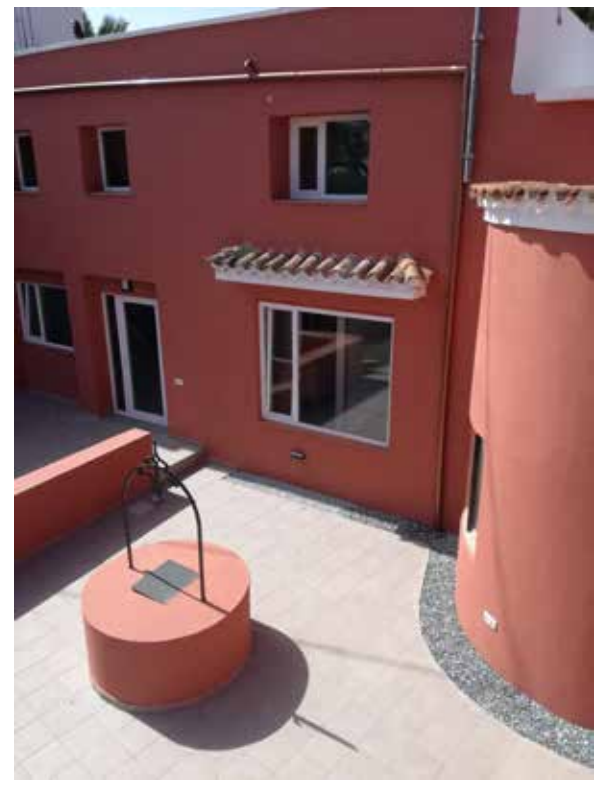




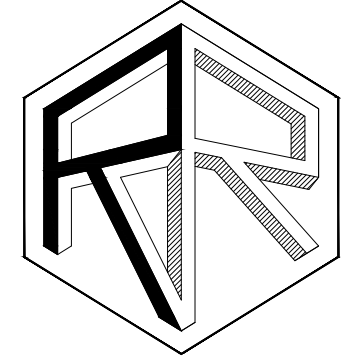
RUYMAN RODRIGUEZ
ARQUITECTO

JARDÍN DE INFANCIA.
MAURITANIA. AÑO 2019.

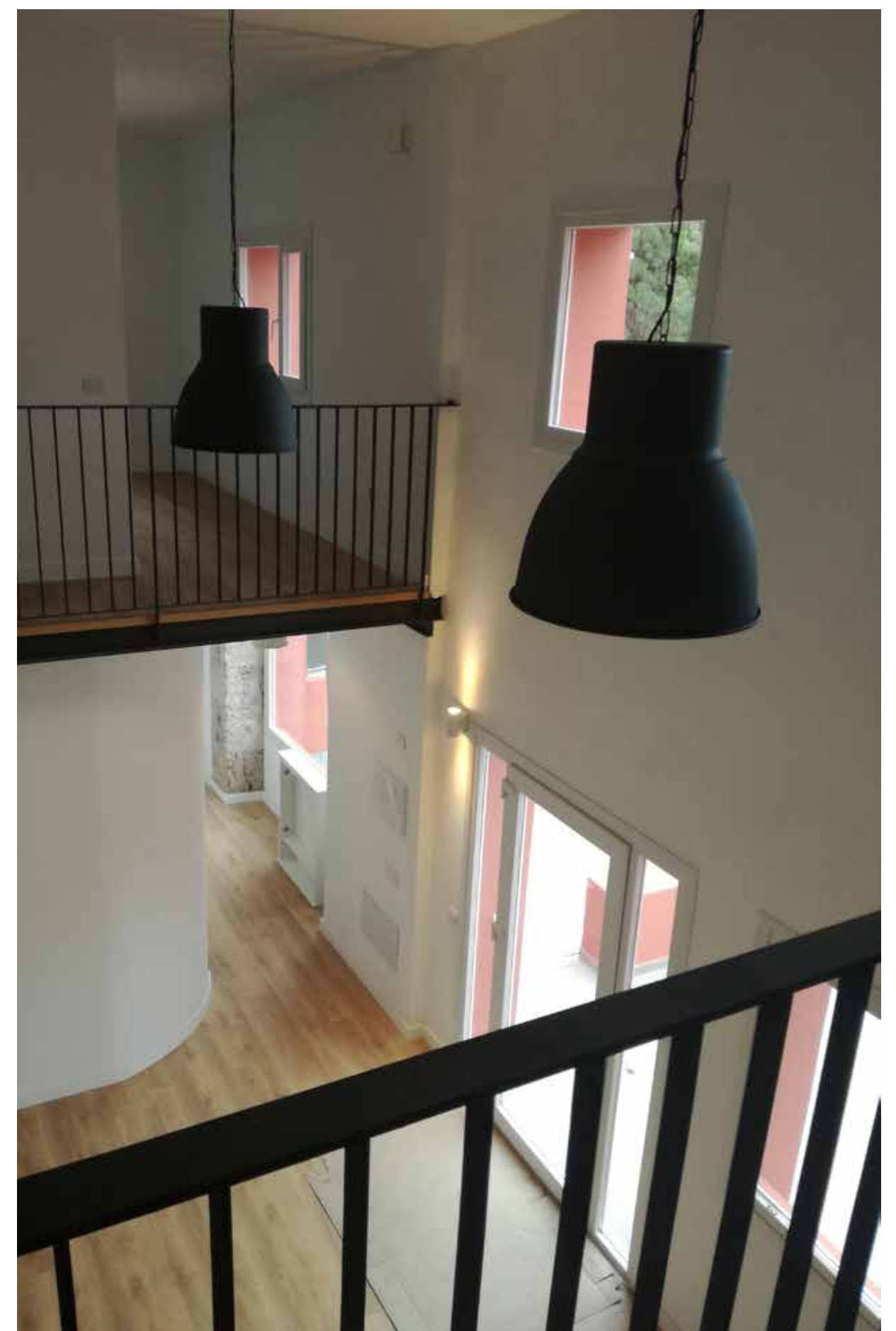
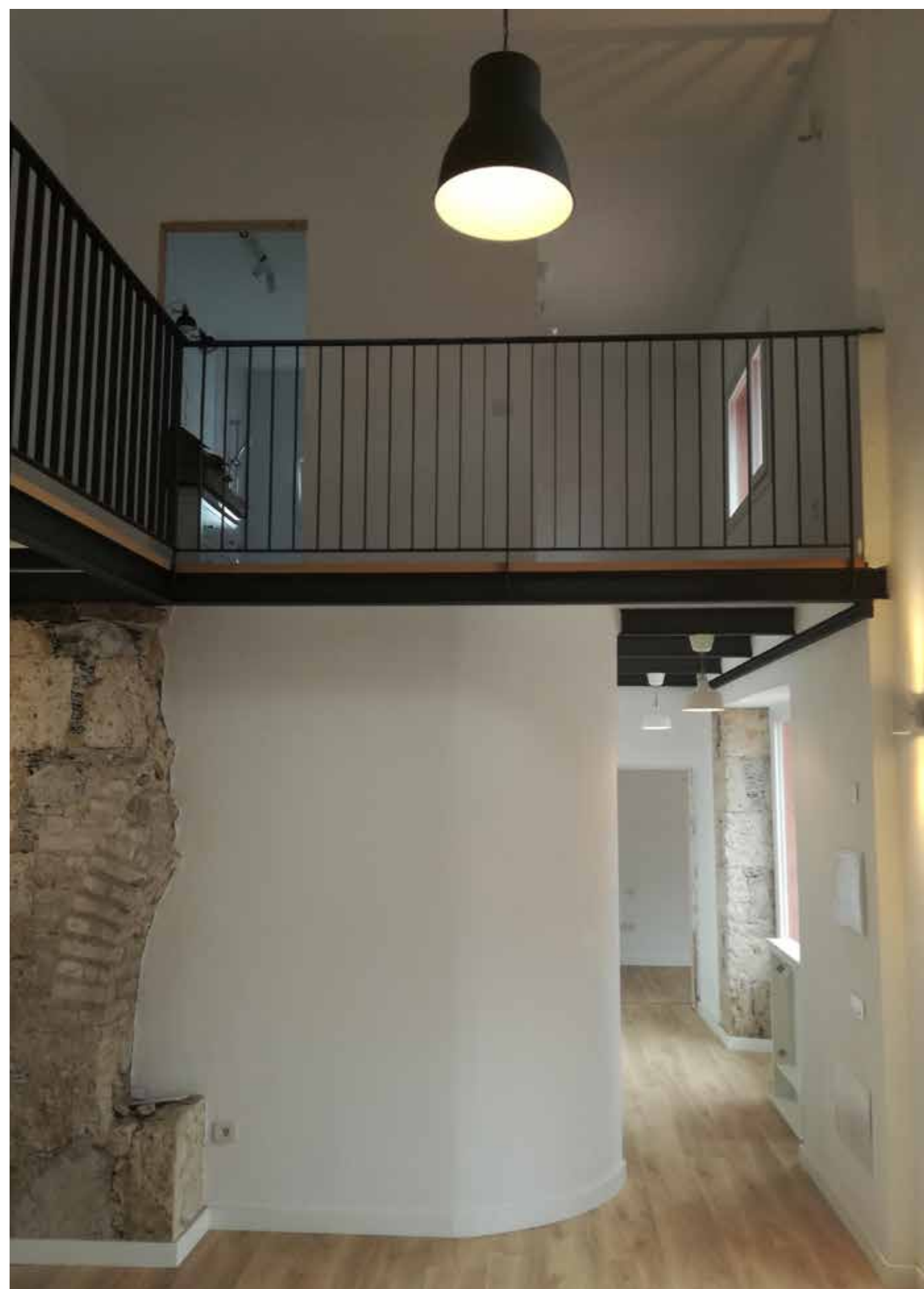
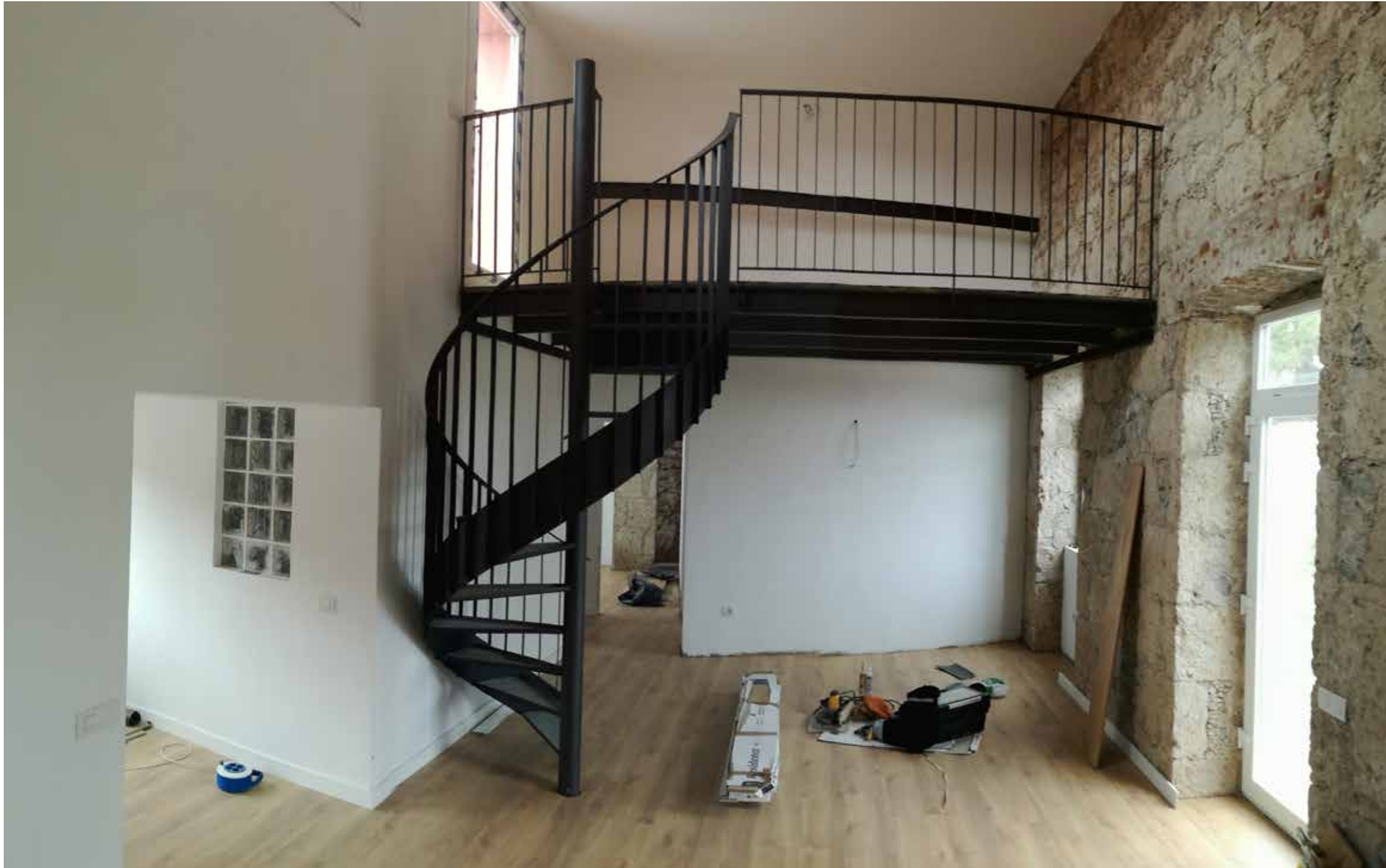


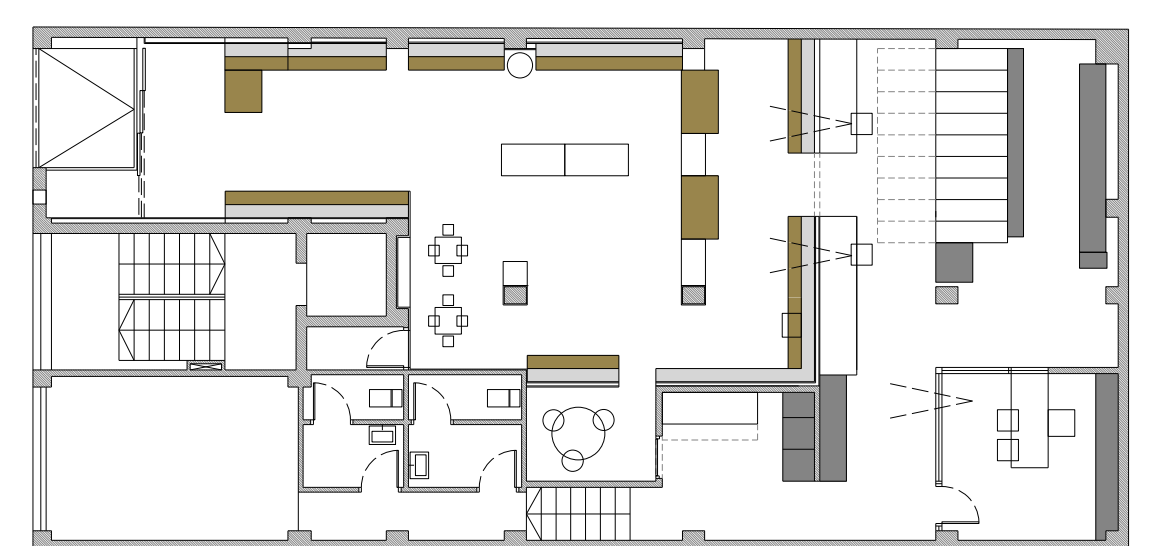


DOS VIVIENDAS CÚBICAS.
GRAN CANARIA. AÑO 2016.

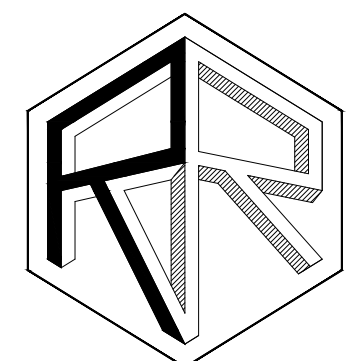


RUYMAN RODRIGUEZ
ARQUITECTO



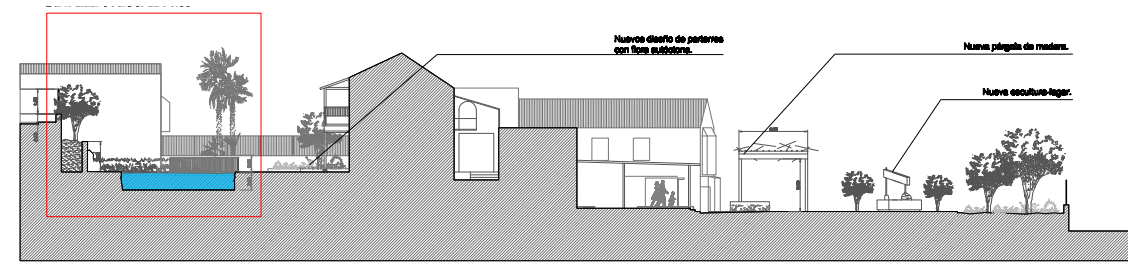


FARMACIA EN BLANCO Y ROJO
 GRAN CANARIA. AÑO 2010.
 GRUPO APOTHEKA S.A.



RUIYMAN RODRIGUEZ
 ARQUITECTO





CASA DEL VINO, CHARCA Y JARDINES. GRAN CANARIA. AÑO 2017.



VEGETACIÓN EXISTENTE

(1) DRACON (Arceuthobium dracunculoides)

(2) PALMERA (Phoenix dactyloides)

(3) EUCALIPTO (Eucalyptus sp.)

(4) ALAMO (Populus alba)

(5) ALNORROJO (Alnus glutinosa)

(6) ALBUQUEQUE DEL JAVÁN (Quercus ilex)

(7) CIPRÉS (Cupressus sempervirens)

(8) CICA (Cyperus sp.)

(9) HIBISCO (Hibiscus sp.)

(10) FLOR DE COPO (Anemone pulsatilla)

(11) JACARANDA (Jacaranda mimosifolia)

NUEVA VEGETACIÓN PROPUESTA

1. SALAM DE HOCHE (Santalum album)

2. CIPRIOLLA ARBOREA (Santalum album)

3. EUCALIPTO (Eucalyptus sp.)

4. EUCALIPTO (Eucalyptus sp.)

5. ALNORROJO (Alnus glutinosa)

6. ALNORROJO (Alnus glutinosa)

7. ROSALTO DE MONTE (Rosa sp.)

8. LAVANDA (Lavandula sp.)

9. JACARANDA (Jacaranda mimosifolia)

10. HERBA PLATERA (Santolina sp.)

11. NO MO CLIVIER (Santolina sp.)

LEYENDA

(1) Planta Existente

1 Planta Nueva

Placón Marrón

Placón Negro

Canto Rodado Blanco

12. TALLADO DE HEDERA (Hedera helix)

13. HEDERA (Hedera helix)

14. VINO (Vitis sp.)

15. MALFURADA (Pyrus sp.)

16. LINDERO (Ligustrum sp.)

17. NOLVA (Nolva sp.)

18. POLVO DE MONTE (Pyrus sp.)

19. LINDERO (Ligustrum sp.)

20. NOLVA (Nolva sp.)

PROYECTO

ACONDICIONAMIENTO EXTERIORES CASA DEL VINO

Colaboradores:
Yamila González, Arquitecta.
Alberto Velasco, Arquitecto.
Juan Miguel Alonso, Aplanador.
Isabel Hidalgo, Paisajista.

Promotor:
Cabildo de Gran Canaria.
Consejería del sector primario y soberanía alimentaria.
Servicio de Infraestructura rural.

Arquitecto:
Ruymán Rodríguez Suárez.
Av. Colgado nº 248
Calleja de los Vecinos de Gran Canaria
Tf: 922 48 48 88

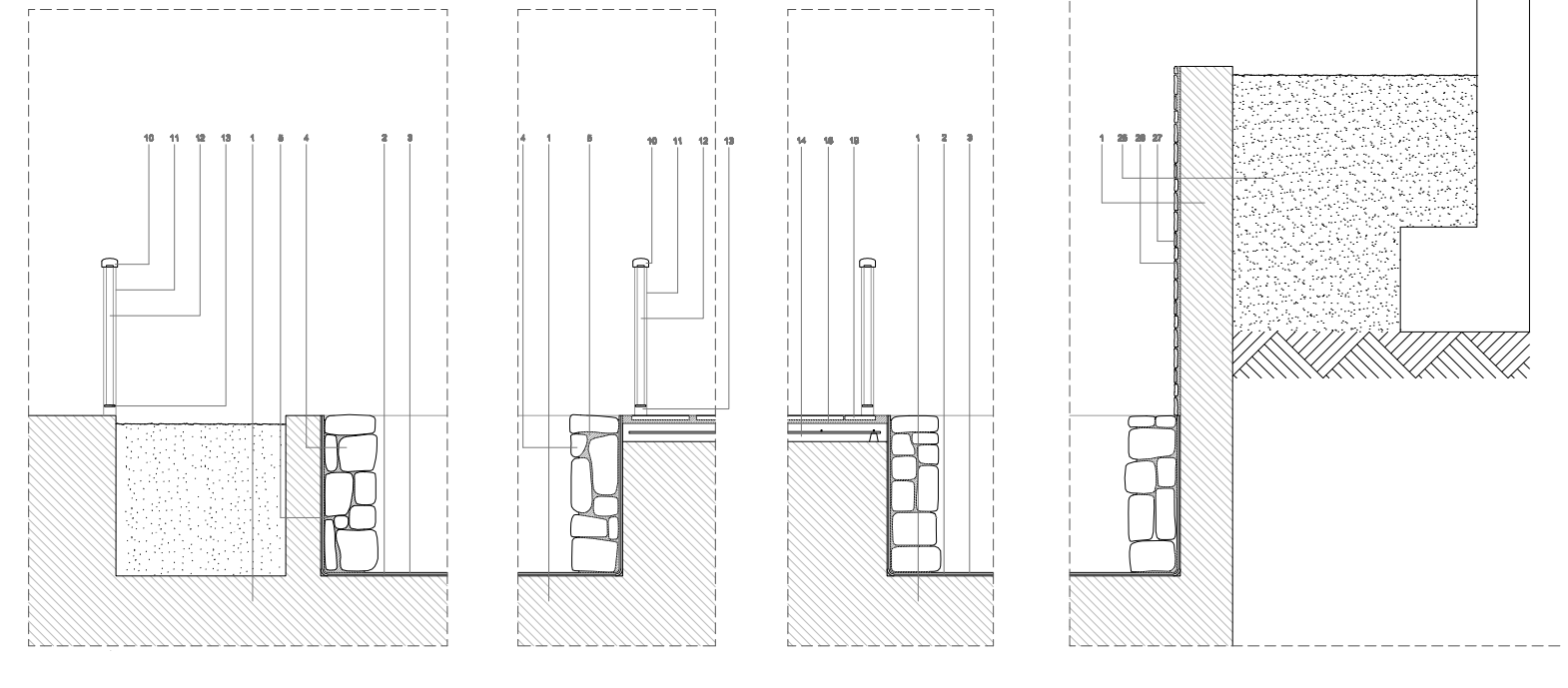
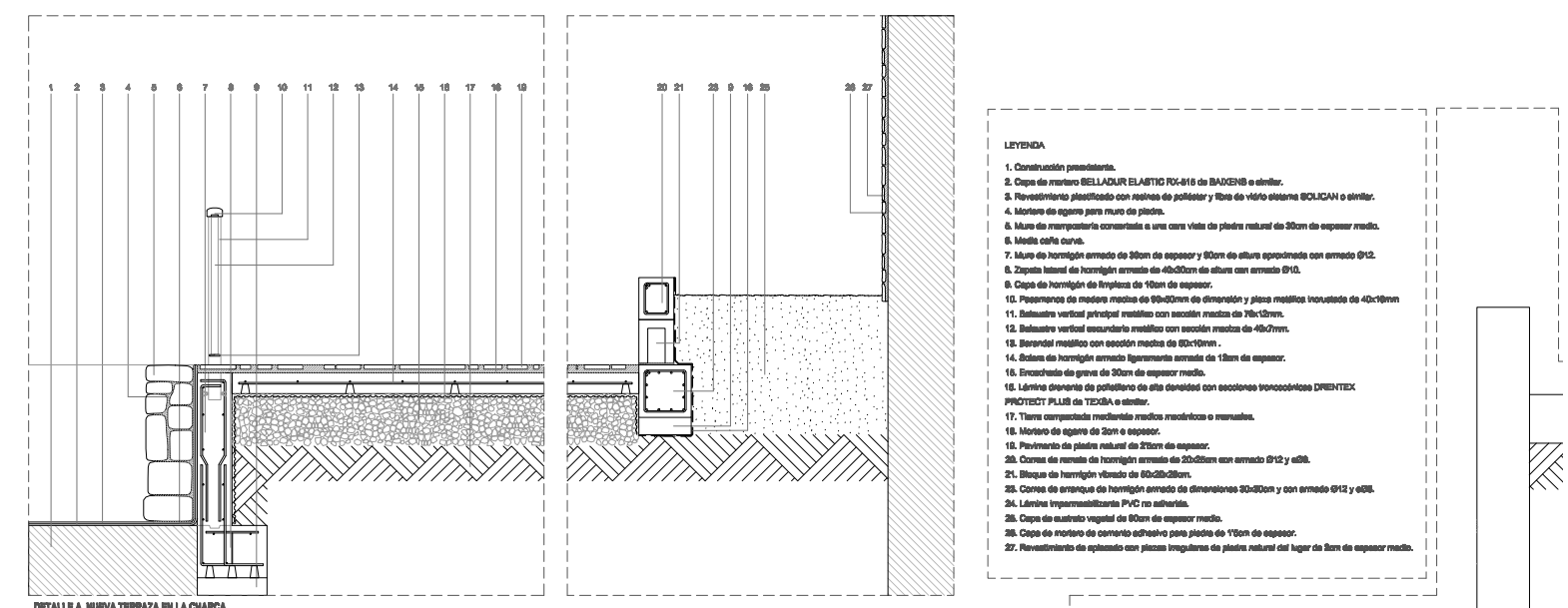
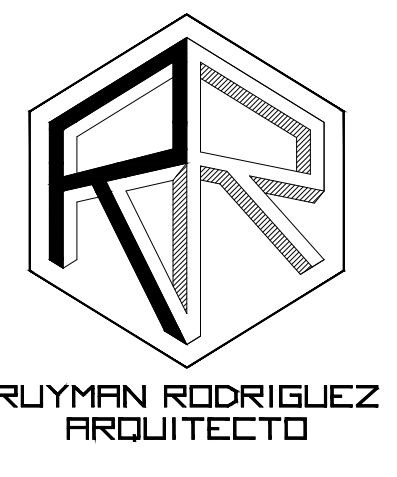
VEGETACIÓN PROPUESTA

Escala: 1/200

06

PLANO

Fecha: JULIO 2017

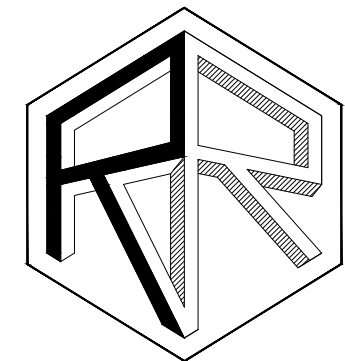




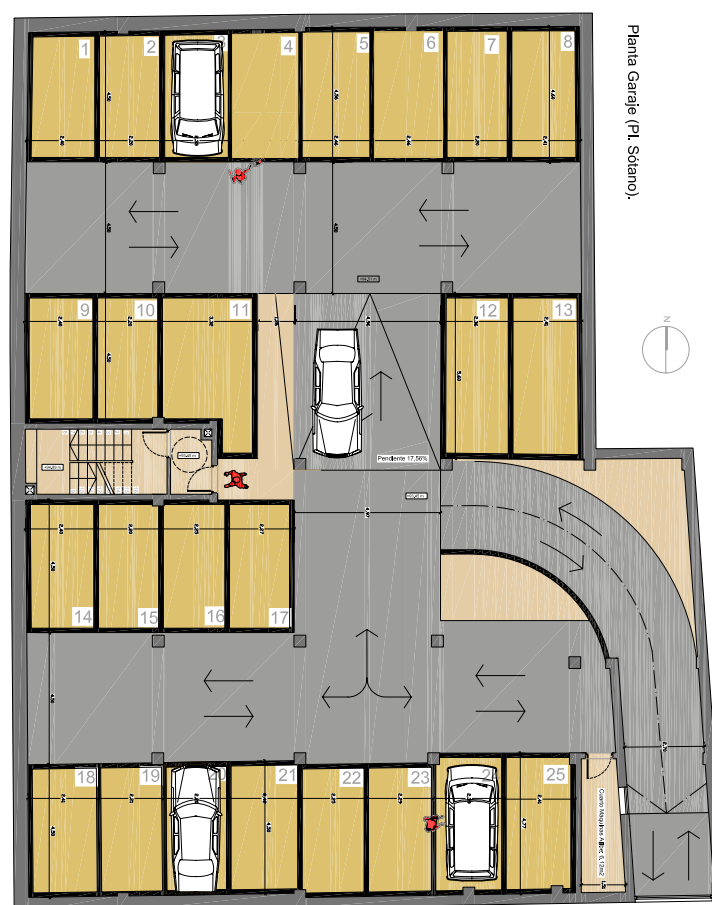
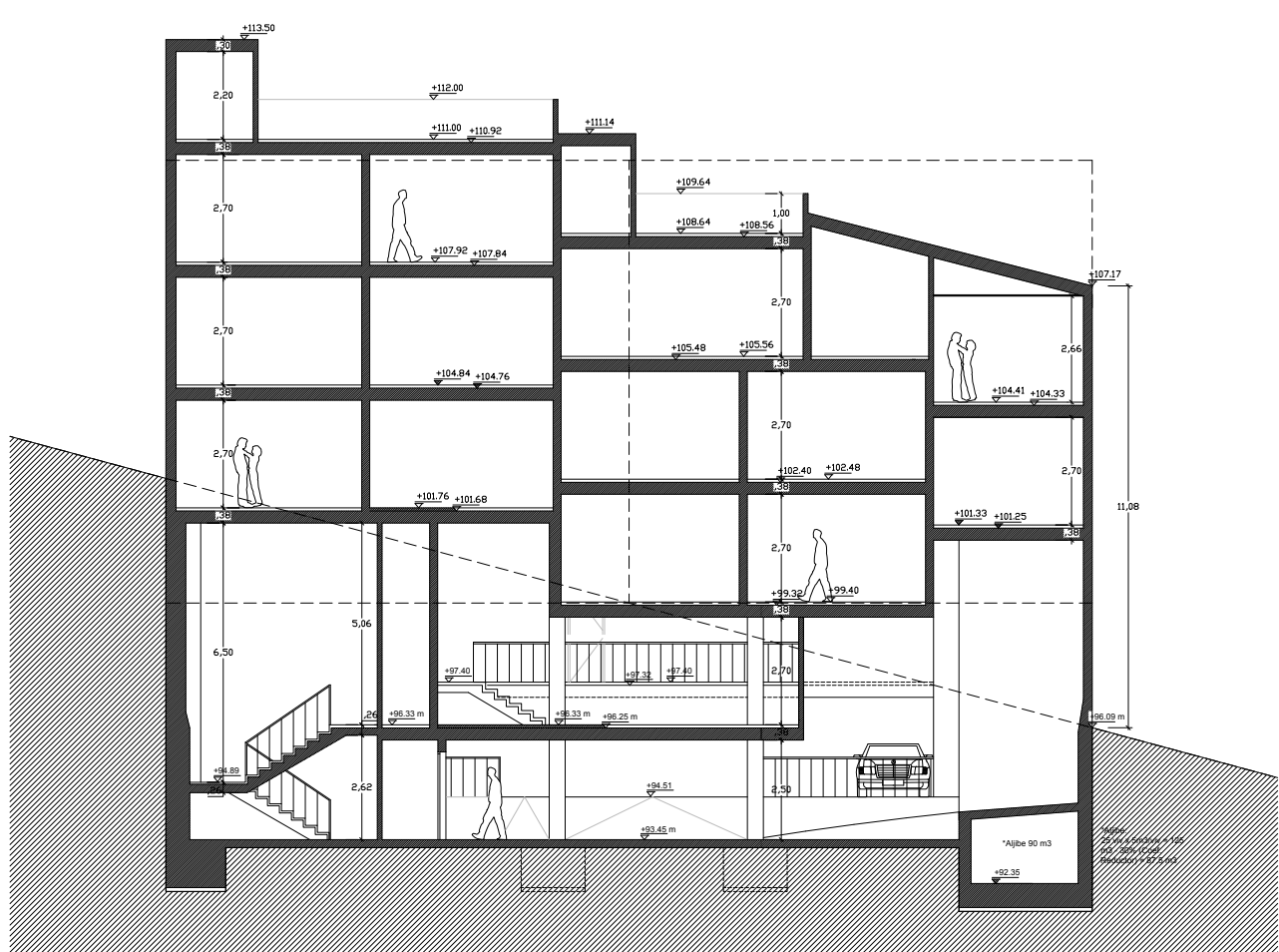
Planta Acceso (Pl. Semisótano).

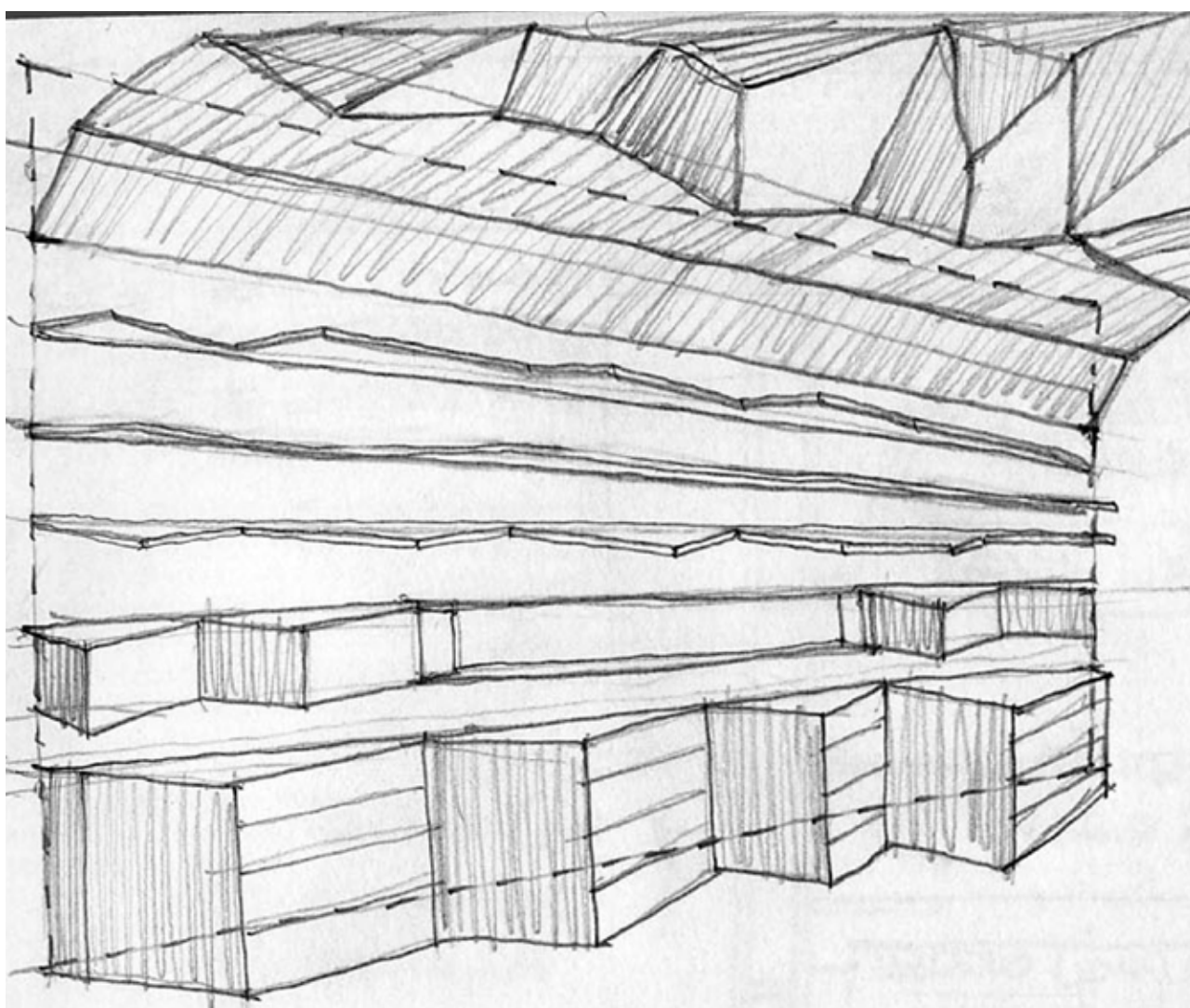
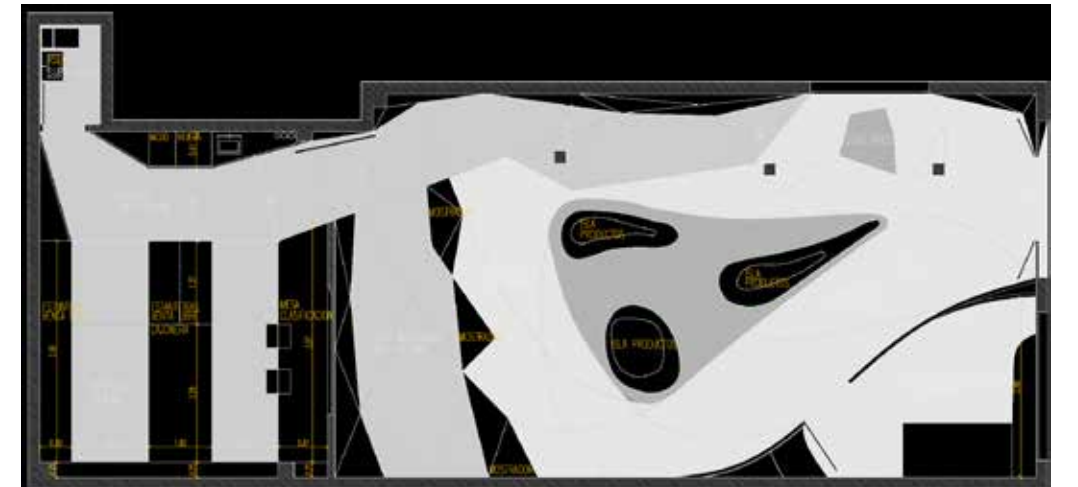
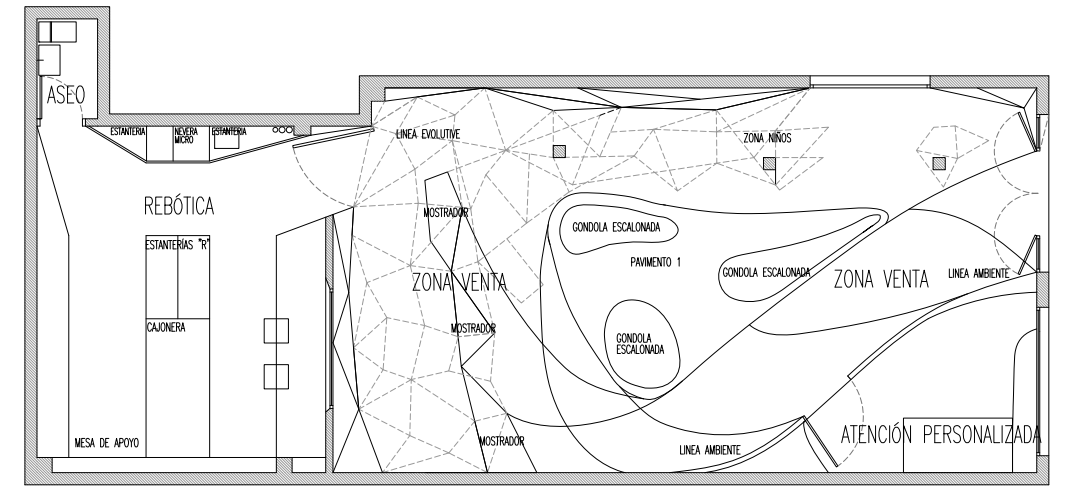
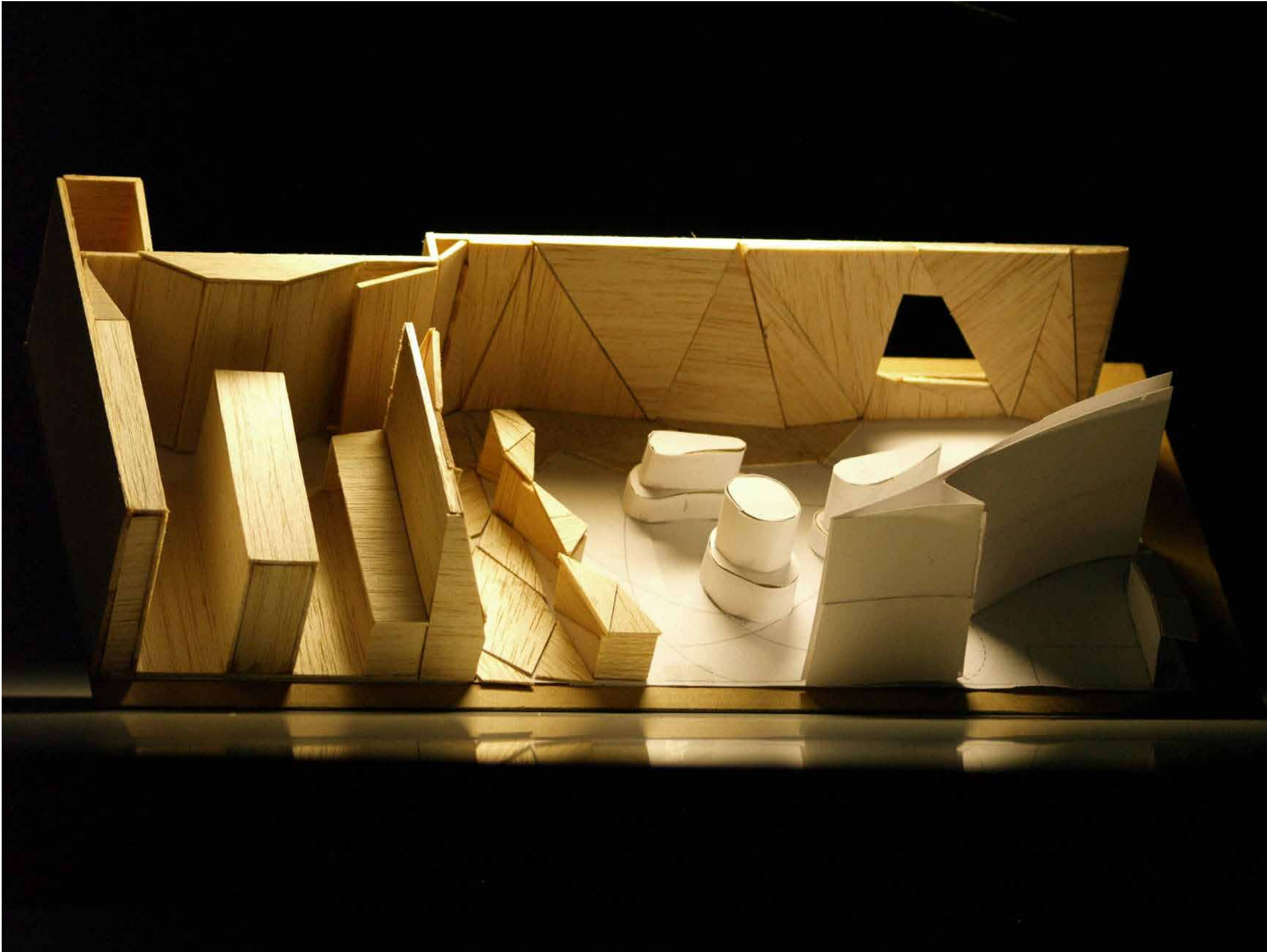
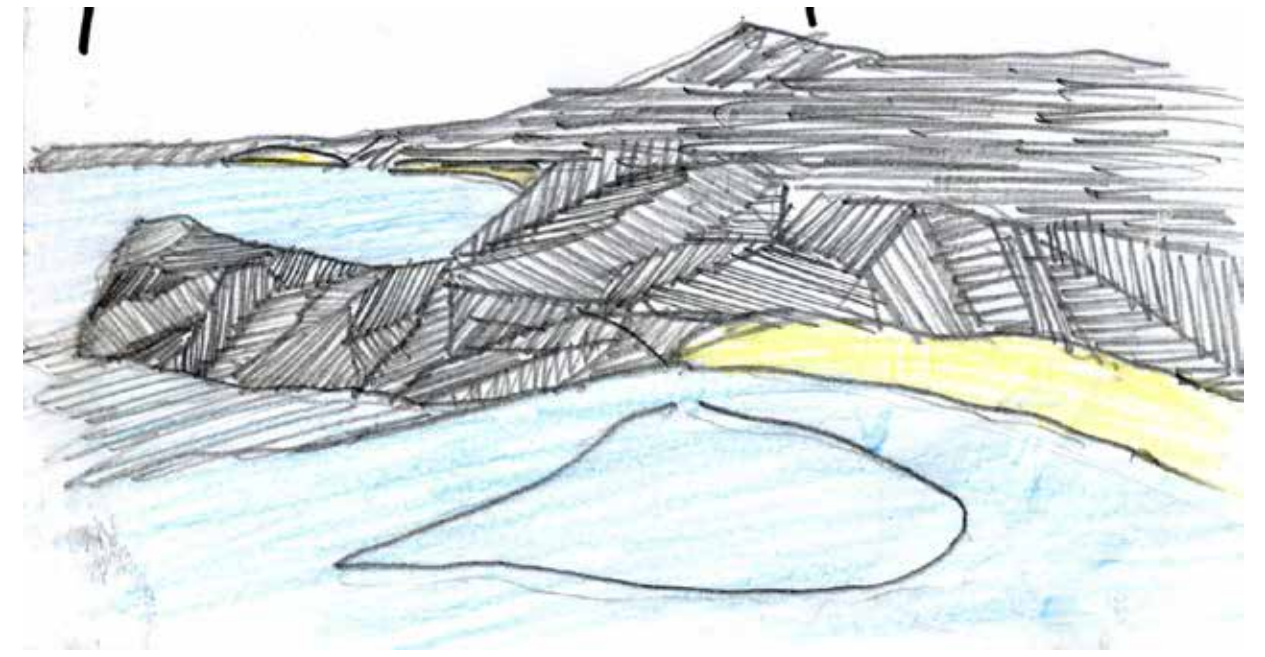
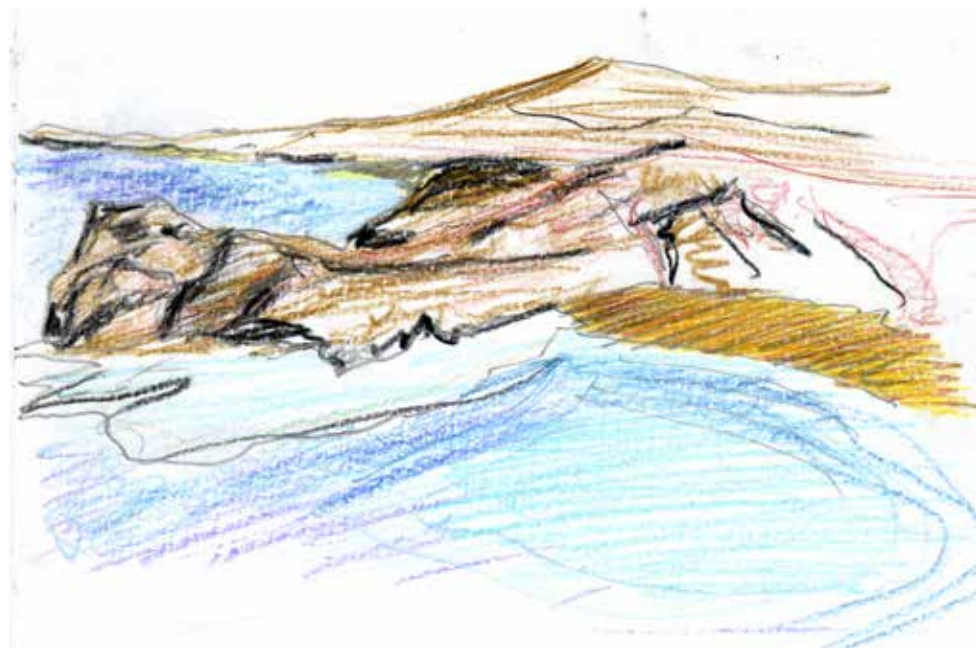


EDIFICIO PLAZA.
GRAN CANARIA. AÑO 2007.

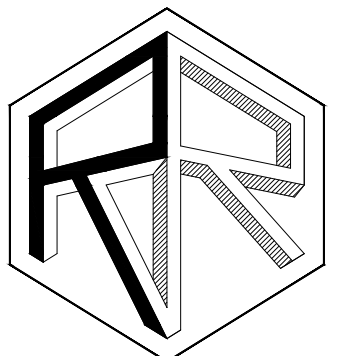


RUYMAN RODRIGUEZ
ARQUITECTO

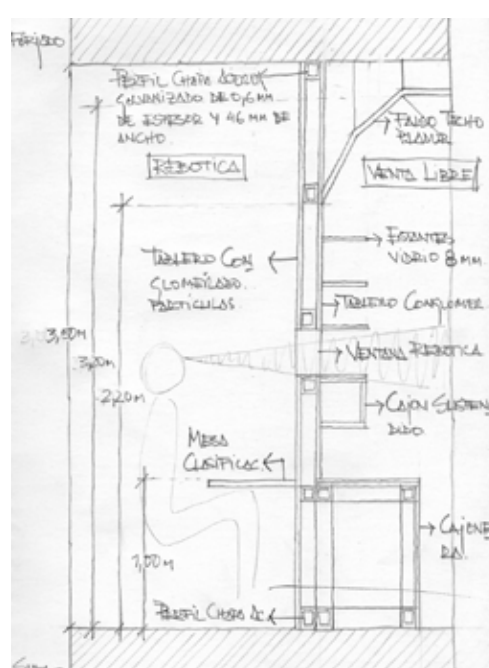
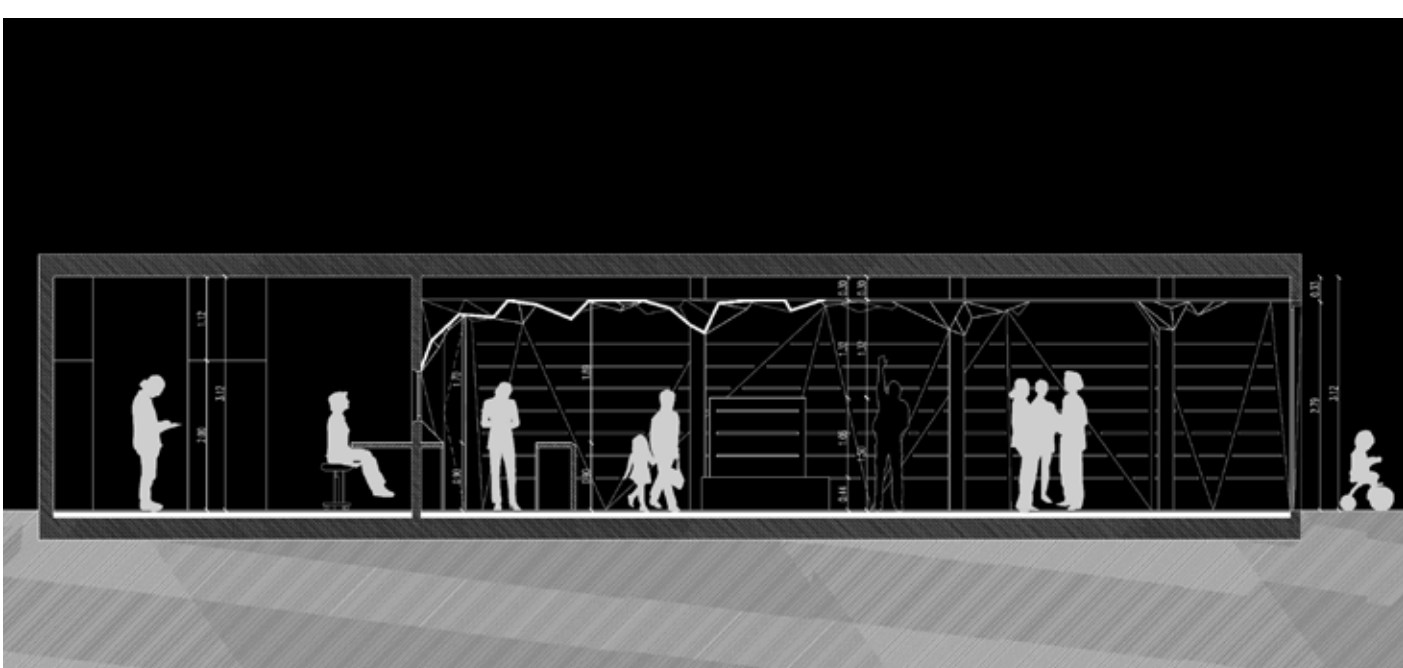
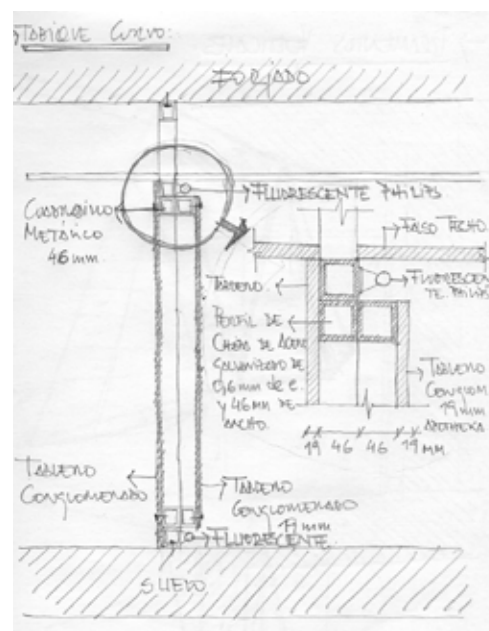




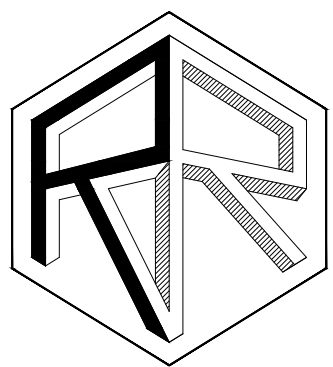
FARMACIA VOLCÁNICA.
LANZAROTE. AÑO 2009.
GRUPO APOTHEKA S.A.



RUYMAN RODRIGUEZ
ARQUITECTO



VIVIENDA LA VAQUERÍA.
GRAN CANARIA. AÑO 2015.

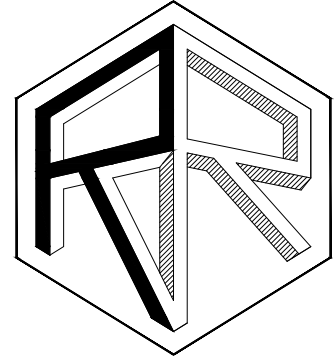


RUYMAN RODRIGUEZ
ARQUITECTO

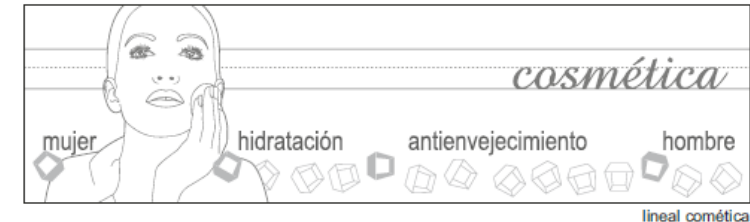
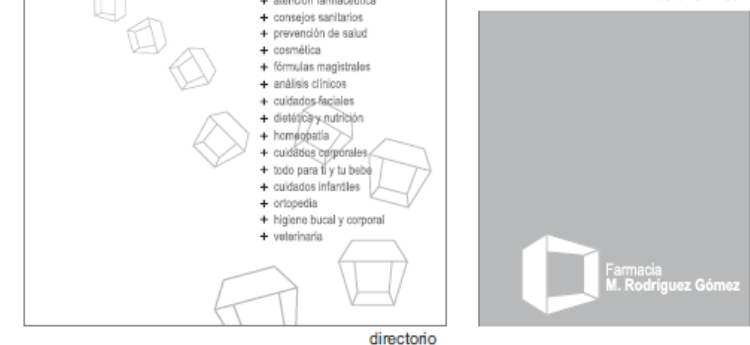
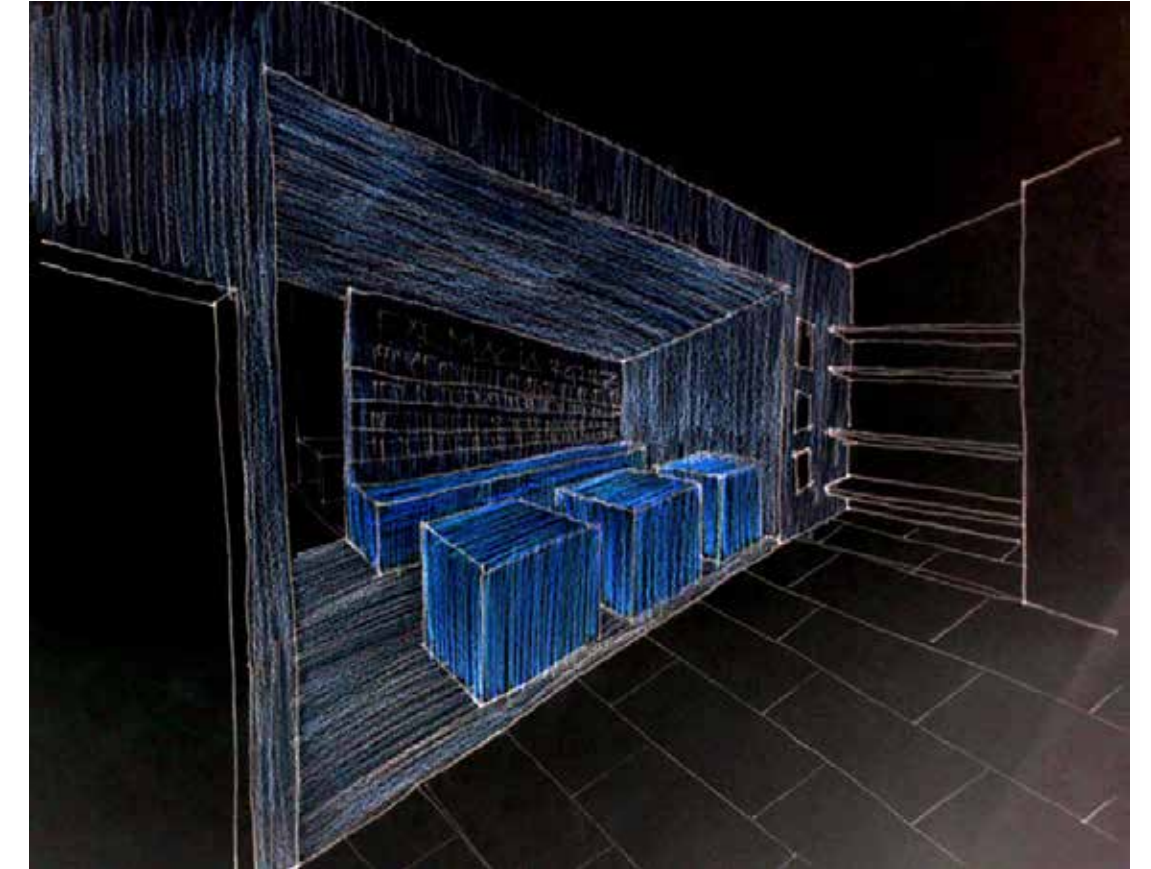
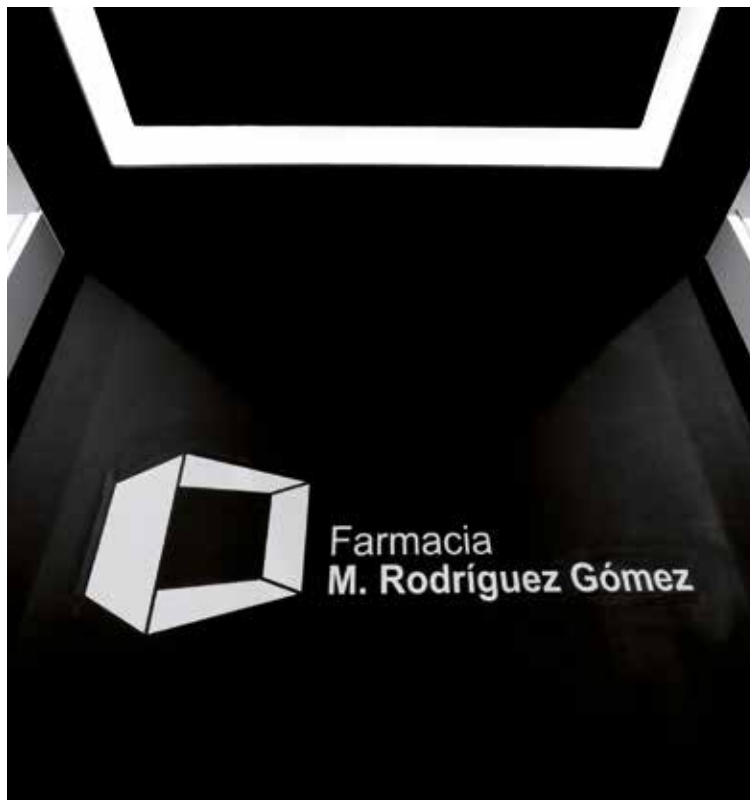




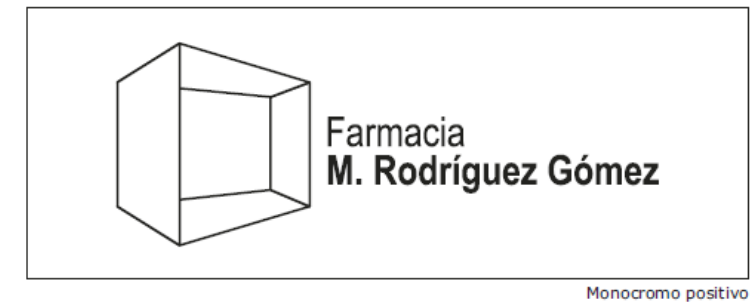
FARMACIA EN BLANCO Y NEGRO
 GRAN CANARIA. AÑO 2010.
 GRUPO APOTHEKA S.A.

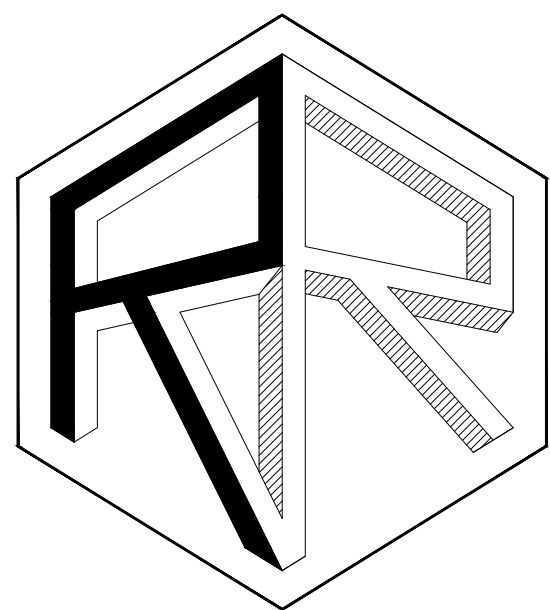


RUYMAN RODRIGUEZ
 ARQUITECTO



-Versión monocromática
 Con mucha frecuencia la marca deberá utilizarse a una sola tinta, generalmente negra, aunque a veces puede ser otra. Esto puede ocurrir sobre fondos claros o sobre fondos oscuros, caso en que la marca aparecerá en negativo.





RUYMAN RODRIGUEZ
ARQUITECTO